



# July 2022 - December 2022 Residency & Alumni Newsletter



## Upcoming Events:

**CORD Academic Assembly - March 21-24 in Las Vegas, Nevada**

**Spring Retreat March 28-30 *Palm Springs Here we Come***

**CalACEP Annual Legislative Leadership Conference - April 18**

**AAEM Scientific Assembly - April 21-25 in New Orleans, Louisiana**

**SAEM Annual Meeting - May 16-19 in Austin, Texas**

**Graduation Class of 2022 - June 24**

**Academy Health June 24-27 Seattle, Washington**

# Message from the Chair



Happy New Year to all of you! As we usher in 2023 and leave 2022 behind, I'm glad to say that we are finding some return to normalcy after a very challenging couple of years. There are still many challenges ahead, including Boarding, Funds Flow, and new documentation rules, but I think we have proven that we are a remarkably flexible and resilient bunch, and I know that we will continue to grow and thrive.

We have added a bunch of new faculty members over the past several months, and more will be starting this Spring and Summer. You'll learn more details about our new faculty later in the newsletter, and you'll see that they are an extremely talented group. In addition to being excellent clinicians, they add a great deal of expertise in research, ultrasound, toxicology, education, and administration.

After a busy transition period, we are settling into our new four-week core medical student rotation for the UCLA School of Medicine. Thanks to a lot of effort by Stephen Villa, Max Berger, and our entire education team, we have rolled out the rotation at 6 sites, including Reagan, Santa Monica, Olive View, Harbor, VA, and Bakersfield.

We should also congratulate **Dr. Natasha Wheaton**. Natasha was named the Assistant Dean of Curricular Affairs for the School of Medicine and began that role in December. As part of the DGSOM leadership team, she will focus on building interprofessional education activities throughout all 4 years of medical school.

And as of November 2022, **Dr. Richelle Cooper** (1998) became the Executive Deputy Editor for *Annals of Emergency Medicine*. In this role, she will have even greater influence in shaping the leading journal of our specialty.

We also had a successful recruitment season for new fellows for next year, adding fellows in Medical Education, Administration, National Clinician Scholars Program, and IDHEAL/NCSP. We'll introduce you to them in detail in a future newsletter.

**Craig Goolsby** (2008) hit the ground running in September as the new Chief at Harbor-UCLA, and is already having a major impact!

Many of us went to San Francisco for ACEP Scientific Assembly last Fall, and it was great to see so many of our alumni again *in person*!

Again, let's thank **Richelle Cooper** (1998) for putting together yet another terrific newsletter to let you all know what has been happening around our department and residency program.

Respectfully submitted,

**Greg Hendey** (1993)  
Chair, UCLA Emergency Medicine

The **UCLA DEM mission** is to be a global leader in Emergency Medicine by:

- Providing excellent care to all patients we serve
- Conducting leading-edge research that advances the health of our patients and community
- Training physicians to be innovative and inspiring leaders





# Welcome and Learn More about our New Faculty

## Vital Signs:

Huntington Beach, CA  
Undergrad: UC Santa Cruz  
Med School: Rocky Vista University  
Residency: UCLA Emergency Medicine  
Fellowship: UCLA, Access and Innovation in Med Education

**Brittany Guest DO (2019)** - Britt was born and raised in Huntington Beach, California. She attended undergraduate at UC Santa Cruz, medical school at Rocky Vista University. She joins our Emergency Medicine faculty, already well-known by everyone. She completed our residency program in 2019 as one of our chief residents. After residency she completed the UCLA Access and Innovation in Medical Education fellowship that she helped design, working closely with another UCLA grad, Mel Herbert (1995), and the production crew at EM:RAP. Since joining the faculty at UCLA Britt is working clinically at both Reagan and Santa Monica. She also continues her work with EM:RAP, including numerous videocasts, podcasts, designing major CME conferences, and lecturing internationally.

Hometown: Boston, MA  
Undergrad: UCLA  
Med School: USC  
Residency: NYU/Bellvue  
Fellowship: UCLA Medical Education  
Masters: Johns Hopkins (Education in Health Professions)

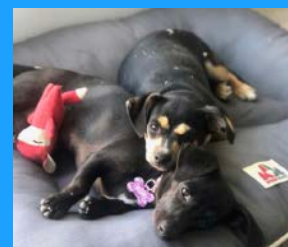
**Max Berger, MD, MEHP** - Although Max was born in Boston, MA, he grew up in the South Bay in Los Angeles. He went to UCLA for college before going across town to USC for medical school, then to New York at NYU/Bellvue for EM residency, finishing in 2020 in the epicenter of COVID. After residency, Max came to UCLA for a 2-year Medical Education & Simulation Fellowship, while also completing a Master's in Education from Johns Hopkins. Now he joins our faculty, serving as the Assistant Medical Student Director and working clinically at both Reagan and Santa Monica. His academic interests include medical education, particularly UME, curriculum development, and simulation. When not at work, you can find him walking on the beach with his wife, Emily, his dog, Whiskey, or watching a Red Sox game.

Hometown: Annandale, VA  
Undergrad: Princeton  
Med School: Northwestern  
Residency: University of Chicago  
Fellowship: UCLA, Research  
Masters: UCLA, Health Policy and Management

**Annette Dekker, MD, MS** - Annette was born and raised in northern Virginia. She attended Princeton for undergrad, then moved to Chicago for medical school at Northwestern University. She completed EM residency at the University of Chicago, serving as chief resident. In 2020, she continued her migration west by joining UCLA for a research fellowship focused on health equity. She now joins our growing Health Services Research faculty at UCLA, with interests in implementation of trauma-informed interventions, immigrant health and policy, and equitable resource distribution. Her clinical time is split between Reagan, Santa Monica, and Olive View. Outside of the ED, Annette can be found attempting some new water sport or hiking in the mountains surrounding Los Angeles.

Hometown: Pacoima, CA  
Undergrad: UCLA  
Masters #1: Harvard (MPH – Quantitative methods)  
Med School: New York Medical College  
Resident: UCSF  
Fellowship: UCLA IDHEAL and NCSP  
Masters #2: UCLA (Health Policy and Management)

**Jesus Torres, MD, MPH, MS** - Jesus was born and raised in the backyard of Olive View. He attended UCLA for undergrad then joined the research team at Olive View for a few years. He then went to the northeast for medical school at NYMC and an MPH at Harvard. He completed residency at UCSF and returned to UCLA for dual fellowships in IDHEAL and the National Clinician Scholars Program (NCSP), and completed a second Master's in Health Policy and Management. Jesus now joins our research faculty and will be working clinically at UCLA, Santa Monica, and Olive View. He has broad academic interests in social EM, infectious disease, and clinical research. When not working or thinking about research, he loves road trips and spending time with his two doggies, Diego and Frida.



# And Welcome More New Faculty

## Vital Signs:

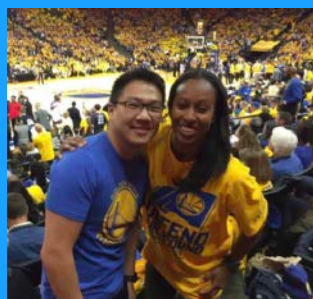
Hometown: Oakland, CA  
Undergrad: UC Berkeley  
Med School: Berkeley-UCSF  
Residency: UCSF  
Fellowship: CHLA, Pediatric Emergency Medicine  
Masters: Public Health (UCLA)

**Jessica Chow, MD, MPH** - Jessica was born in Oakland, to immigrant parents from China. The eldest of four, she is the first doctor in her family. She graduated from Berkeley, and obtained a Master's in Public Health from UCLA. After completing the joint medical program at Berkeley-UCSF, she spent the next four years at the UCSF EM residency program. Upon graduation, she entered fellowship in Pediatric Emergency Medicine (PEM) at Children's Hospital of Los Angeles (CHLA). Now Jess joins our faculty as our PEM specialist! She will be working clinically at RR, SM, and CHLA. Her academic interests include process improvement in care of pediatric ED patients, and social determinants of health research. Outside of work, you may find her hiking in national/state parks, exploring new restaurants, or finding great travel deals!

**Elizabeth Samuels, MD, MPH, MHS** - Liz Samuels grew up outside Albany, NY and studied history at Reed College, in Portland, OR. After several years of direct service and community organizing work with adolescents experiencing homelessness and people leaving incarceration, Liz attended Tufts University School of Medicine. She completed her emergency medicine residency at Brown, where she served as chief resident, and a health policy and research fellowship at the Yale National Clinician Scholars Program. Since 2018, Liz has been on faculty at Brown, working on health policy, clinical care, and research with a focus on health equity, social emergency medicine, substance use disorder treatment and harm reduction, URM healthcare workforce development, and LGBTQI+ emergency care. She will be working clinically at Reagan, Santa Monica, and Olive View. Outside of the ED, she can be found exploring the San Gabriel Mountains, baking, biking, gardening, spending time with her dog and family, rabble rousing, and trying to master the pizza oven.

Hometown: Ames, IA  
Undergrad: St. Olaf College  
Med School: University of Iowa  
Residency: University of Chicago  
Fellowship: Ultrasound (UCSF)

**William Shyy, MD** - Will Shyy joins us from UCSF. He is originally from Ames, IA and completed his residency and chief residency from the University of Chicago. He then completed an emergency ultrasound fellowship at UCSF, and has stayed on as faculty at UCSF for the past 7 years. At UCSF, Will served as the Ultrasound Director, Ultrasound Fellowship Director, and was a Bridges Coach for the UCSF School of Medicine. He has earned numerous teaching awards, including the UCSF EM Bedside Teaching Award, the UCSF Academy of Medical Educators' Excellence in Teaching Award, and the ACEP National Junior Faculty Teaching Award. Will is very excited to join UCLA and to be closer to his family in the LA area. He will add greatly to the ultrasound expertise of our faculty, and will be working clinically at Reagan and Santa Monica.





# IDHEAL and Social EM Updates

Several social medicine interventions are successfully improving the care of patients at Olive View. A huge testament to everyone's efforts and the leadership of Breena Taira.

**Language Justice:** The work continues to improve availability for in person translation at Olive View. There are now 10 full time interpreters for the hospital with coverage from 8a-11pm and plans to move forward to expand coverage further. The LanguageLine InSight Video Interpreting continues as well for times when there is need for other languages, off hours, need for sign language etc.

Breena Taira and Jesus Torres continue their research on language justice with plans to survey patient perspective on language access and determining further gaps. Additional efforts to help institute bilingual certification for residents also continues.

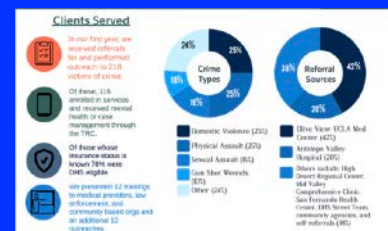


Meet the OV Language Services Team!  
Walter, Fabi, Edith, Tirza, Eduardo, Hillary, Sandra, Adrie, Alice & Aleida

**Produce Distribution:** Prior surveys in the waiting room at Olive View not surprisingly identified a great deal of food insecurity for the population we serve. The produce distribution at Olive View twice a month has been helping to serve the needs of our patients. The distribution is all volunteer run. At our most recent event on November 17th, 5,625 pounds of produce was distributed to 237 individuals representing 1150 people in the households served. Eighty percent of the community members taking advantage of this benefit are Olive View patients, 86% with a chronic medical condition. About three quarters of the patients use the drive through method to pick up the groceries which can be heavy, the other quarter walk up and efforts to establish a means to deliver the produce for those most vulnerable and without access are being developed.



**Trauma Recovery Center:** A Trauma Recovery Center (TRC) helps victims of crime recover, providing (free to the victim) mental health services and wraparound case management including legal services to individuals without access to other resources. It is complementary to the Los Angeles network of Hospital based Violence Intervention Programs (HVIPs). The Olive View Trauma Recovery Center opened last year, and has been providing assistance to victims and family members of victims. Referrals are coming from local area community partners and hospitals, and any individual who was a victim of a crime within the past 3 years is eligible. The Olive View TRC includes a take what you need shelf and closet to help victims with their immediate material needs. Donations are welcome- monetary donations can be made here: <https://oliveviewtrc.org/donations>. Gently used clothing for adults and children, hygiene products and pantry items can be donated at the North Annex on the Olive View campus.

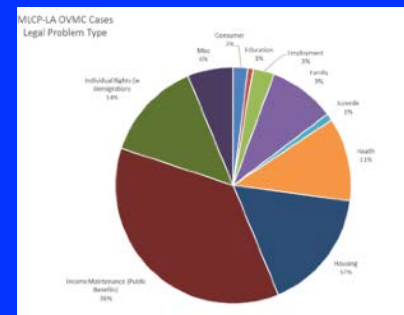


<b>Our team is comprised of:</b>	Breena Taira (Administrative Director)	Daisy Rosales (LMFT)
	Henry Kim (Executive Sponsor)	Erika Ibarra (LMFT)
	Michael Yoo (Psychiatrist)	Linda Rojas (LMFT)
	Julie Rattray (Attorney, MLCP)	Chryssy Miranda (Medical Case Worker)
	Gerson Soto (Attorney, MLCP)	Yaritza Lopez (Program Coordinator)
	Kele Kirschenbaum (Psychologist)	Jazmin Callejas (Data Entry)



**Medical Legal Community Partnership:** The MLCP is a collaboration between DHS and four local non-profit legal services organizations that serve low-income residents in Los

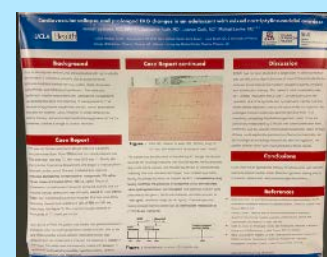
Angeles County helping patients with legal problems that affect their health in conjunction with the Patient Centered Medical Homes (PCMH). They have helped patients eliminate debt, restored their Medi-Cal benefits, defend patients against eviction and assist with poor housing conditions, assist with immigration and legal status, help with child support or custody issues, assist with restoring or obtaining public benefits (food, SSI, cash aid), special education, income and employment. The legal partners include: Neighborhood Legal Services of Los Angeles County, Legal Aid Foundation of Los Angeles, Mental Health Advocacy Services and Bet Tzedek Legal Services. The Olive View Medical Legal Community Partnership has helped with over 1200 legal cases on behalf of patients since launching in February 2020.



# UCLA Toxicology

One of our hardest working faculty - Michael Levine has been collaborating with numerous research groups and making opportunities for residents to get involved. At this year's North American Congress of Clinical Toxicology (NACCT) 2022 annual conference many residents, faculty and alumni collaborate and present abstracts and posters. Congratulations to Michael Levine, Leanne Cook (2024), Jackie Kurth (2020), Hannah Spungen (2022), alumni and second year toxicology fellow at UCSD Nate Friedman (2021), and second year pediatric EM fellow at UCSD Daniel Ichwan (2021) for their abstracts. In addition, our new faculty member Evan Schwarz, now doubling our toxicology faculty group, a 100% increase, is equally active and will be a great addition to our group.

- Love J, **Levine M**, Aldy K, Brent J, et al on behalf of the ToxIC Fentanyl Study Group. "Tranq dope" opioid overdose: clinical outcomes for emergency department patients with illicit opioid overdose adulterated with xylazine.
- **Friedman N**, Seltzer J, Winkler G, **Ichwan D**, et al. An 8-year-old female with crotalid envenomation and marked myokymia responsive to crotalidae immune F(ab')<sub>2</sub> antivenom.
- Winkler G, Seltzer J, **Friedman N**, et al. Comparative outcomes of F(ab')<sub>2</sub>AV and FabAV for rattlesnake envenomations: a retrospective poison center study.
- Winkler G, Seltzer J, **Friedman N**, et al. Amygdalin poisoning with treated with hydroxocobalamin.
- **Friedman N**, et al. Severe hydrocarbon pneumonitis requiring extracorporeal membrane oxygenation in a pediatric case of makeup brush cleaner ingestion.
- **Friedman N**, Clark R. Crouching zookeeper, hidden dragon: a Komodo dragon bite.
- Seltzer J, **Friedman N**, et al. Unintentional pediatric lithium exposure: a 15-year retrospective analysis of cases reported to the California Poison Control System.
- Winkler G, **Friedman N**, et al. Toxic encephalopathy from intrathecal amphotericin B deoxycholate overdose treated with cerebral spinal fluid exchange.
- **Spungen H**, **Kurth J**, **Cook L**, **Levine M**. Cardiovascular collapse and prolonged EKG changes in an adolescent with mixed nortriptyline/nadolol overdose.
- **Cook L**, **Levine M**. Challenges in diagnosing an environmental cause of recurrent Methemoglobinemia.
- Semple M, **Schwarz E**, Baumgartne K. Bothriechis marchi envenomation treated with crotalidae immune F(ab')<sub>2</sub> antivenom.
- **Schwarz E**, et al On behalf of the Toxicology Investigators Consortium (ToxIC), Utilization of telehealth by medical toxicologists.



Michael Levine and Evan Schwarz ran the American College of Medical Toxicology (ACMT) Board review course this year.



Evan Schwarz was recognized with the ACMT Education Committee Service Award.

Check out additional abstracts from our toxicology group on the newsletter ACEP Scientific Assembly page!





# Cal ACEP AdvancedED

This year's CalACEP annual conference and celebration of the 50th Anniversary of California ACEP was held in San Diego September 2, 2022. The conference is geared to learners, both residents and medical students.



Natasha Wheaton was the Conference Chair, planning and helping run the event.

Greg Hendey (1993) received his CalACEP Education award. Kenneth Kim (2025) was presented his CalACEP Chapter's CalEMRA Award. See more information on the kudos page.

Education fellows Catherine Yu and Ashley Vuong (2022), and residents AJ (2024), Kenneth Kim (2025) and alumni Daniel Ichwan (2021) helped run the Skilled sessions. Catherine ran a pericardiocentesis skill station, Ashley with help from AJ and Kenneth ran the breech delivery skill station and Daniel ran a transvenous pacer skill session.

Ashley Vuong, Catherine Yu, AJ and Kenneth also represented the program at the residency fair.

GENERAL SESSION	
9:00 AM TO 9:05 AM	<b>MORNING</b> Welcome
9:05 AM TO 1:05 PM	Language and Healthcare: At the bedside Diversity Case Reports By CDEB Chairman Award Presentation
1:05 PM TO 2:00 PM	<b>AFTERNOON</b> Big Data to Control the Big Arms of EM: President's Message California Chapter Award Presentation Poster Session
2:00 PM TO 4:00 PM	<b>CLOSING</b> Advocacy Talk Birth Control Chairman Award Presentation Closing Reception
MEDICAL STUDENT	
9:00 AM TO 10:15 AM	<b>MORNING BREAKOUT</b> Someone's Someone Survival Tips for the Greenhorns in EM Building Your Brand Conquer the Interview Creating your PREP to EM Watch: SGA
10:15 AM TO 12:00 PM	<b>AFTERNOON BREAKOUT</b> Skilled Track Residency Fair
RESIDENT	
9:00 AM TO 10:15 AM	<b>MORNING BREAKOUT</b> Strong Your Skills Skilled Track
10:15 AM TO 12:00 PM	<b>AFTERNOON BREAKOUT</b> The Quality of Life Crisis Financial Talk Emergent Higher Level Care Transfer The Ownership Model: That's a Right for You



## EMS Day - Thank you Dr. Uner



# Medical Student Clerkship Re-Design



We want to give a huge shout-out and THANK YOU to all of the residents and attendings that have contributed to the new medical student clerkship and it's successful launch! With the new DGSOM curriculum re-design, emergency medicine has now officially become a required 4-week clerkship spread across 6 sites: Reagan, Olive View, Santa Monica, WLA VA, Harbor, and Kern! This started with last year's roll-out of a required 2-week rotation for MS3s, and in October 2022 we started with the first iteration of the 4-week required rotation for MS2s. We're now past the curriculum overlap period, so moving forward will have MS2s on their 4-week clerkship in addition to our usual MS4 Sub-I rotation. We couldn't do this without all the incredible on-shift and outside of shift teaching by all of our residents and attendings. Especially shout-out to the senior residents who have taken on a much bigger supervisory role with the medical students on-shift!



Outside their clinical shifts, the students have a high-fidelity simulation session, procedural skills session, EMS day, nursing/tech shift, and spend 3 days with our anesthesia colleagues in the OR. Special thanks to AJ Jackanich, Tig Ziyeh, Leanne Cook, Taylor James, Kenneth Kim, Caitlin Oldenkamp, Christian Hernandez, Jackson Kloor, Amanda Amen, Cooper Aakhus, Charlene Gaw, Elle Kettler, Rhea Mathew, Reza Hessabi, Sophia Tiene, Bryan Merte, Miguel Navarro, Catherine Yu, Amir Rouhani,

Rebecca Bavolek, Natasha Wheaton, Anna Yap, Alan Chiem, Kellie Kitamura, Jeremy Shin, Ashley Young, Andy Thorne, Manny Celedon, Jacob Lentz, Jonie Hsiao, Dan Waxman, and George Lim for helping out with those hands-on sessions! There will be plenty more opportunities to get involved, reach out to us if you are interested!



Our incredible medical student coordinators Leila Park, Nathalia Rodriguez, and Emmy Dunsford have also put in a ton of work to make this launch successful; thank you! We definitely couldn't do this without you!



Thank you again to everyone for showing our students such an amazing experience and how great our specialty is!

-Stephen and Max

## Recruiting the Class of 2027



We've been up to recruiting... finished 8 of 10 interview days and will be finished with recruitment on 1/17. We had game night and in January we are hosting our EDI Open House, Specialty Night and Alumni night for the applicants. Match will be March 17, 2023.



Thanks to Jen Cassidy and Matthew Hill for sending swag to the applicants. Thanks to all the residents who turn out to answer questions for the applicants during socials, scheduled zoom information sessions and game night. Thanks to the faculty who help interview, showed up for game night, and champion our EDI efforts.



UCLA VIRTUAL SESSIONS	
8/11	Get to Know Us!
8/16	EMRA Residency Fair
8/25	EM Application Process
8/31	Equity, Diversity & Inclusion
9/7	Why We Chose UCLA
9/14	Ask UCLA Anything



# Equity, Diversity, and Inclusion Committee

The Department's EDI committee has been very active with exceptional leadership by Jamie Bell as Vice Chair of EDI. The work is a collaboration of many residents, faculty, fellows, and staff, including Rhea Mathews (2025), Annie Hoang (2026), Chase Richard (2023), Daniela Alarcon (2025), Matt Hill, Jen Cassidy, Donald Chow, Bonnie Cheung, Stephen Villa, Anette Decker, Carolyn Sachs (1994), Cat Weaver (2017), Jessica Faiz, Richelle Cooper (1998), Rebecca Bavolek, Medell Briggs-Malonson, Rebecca Bavolek, Medell Briggs-Malonson, and all of the residents engagement in recruitment efforts.

We have several committees and areas of focus:

Faculty Recruitment/Retention - our Vice Chair of EDI is an integral part of the faculty search committee, which has been very active - did you see the meet the new faculty pages 3-4? (More than 90 faculty applications) More to start in the next few months and July 2023.

Resident Recruitment/Retention - We are in the midst of recruitment for the class of 2027. The UCLA DEM EDI virtual recruitment event was on 8/31/22. An EDI committee member is always an interviewer for each residency applicant interview day this year. The Virtual EDI-focused interview day executed without a hitch on 12/13/22. The EDI committee faculty + resident members reach out to EDI residency applicants in a coordinated process (earlier than previous years). Ruthy Mamo was selected by MHO to attend SNMA Annual Medical Education Conference in 2023 with a stipend to cover travel/registration/hotel. The UCLA Department of Emergency Medicine will cover travel/registration/hotel for a resident to attend LMSA West Coast Regional Conference in 2023.

Community Engagement - The EDI committee is working with the Center for Prehospital Care (CPC) to create a recurring outreach program for high school students to showcase healthcare careers for URiM + disadvantaged students. Jamie Bell and our CPC leadership met with HPIAM and Orthopaedic Hospital Medical Magnet High School leadership to discuss areas in which the Department of Emergency Medicine can best contribute. Jamie Bell gave a presentation / answered questions for HS students in virtual career days for HPIAM (11/01/22) and Ortho Medical Magnet HS (12/16/22). In additional collaborations we are working with the CPC, the UCLA Health Allied Professions Outreach and Turner foundation to formulate a plan to obtain funding for future efforts.

Professional Development - We will begin integrating the SAEM ADIEM DEI curriculum into different aspects of the UCLA DEM + residency program. In addition we are working with the UCLA Health HEDI office to introduce EDI element sfor patient case review / M&M

Structural Elements - We are currently in the process of reviewing the demographic composition of all UCLA Department of Emergency Medicine Committees and writing a UCLA DEM policy for EDI

Patient Care - A subcommittee is working to create a Digital Patient Equity Dashboard similar to UCSF DEM.

The UCLA Minority Housestaff Organization (MHO) is a resident and fellow organization led organization dedicated to excellence through diversity. We have several residents - Chase Richard (2023), Reza Hessabi (2024), Daniela Alarcon (2025), Christian Hernandez (2025), and Ruthy Mamo (2026) - leading committees and work, and being recognized by their efforts (see the Kudos pages).



# ACEP Scientific Assembly 2022 in San Francisco!

Thanks to Valerie Norton (1995), Mike Gertz, Carolyn Sachs (1994), and Anna Yap (2022) for representing California at ACEP Council.



Congratulations to Ramon Johnson (1984) who received his Council Champion of Diversity & Inclusion Award.



Congratulations to the faculty, alumni and residents who gave presentations.

Sara Crager (2015)

- *Undifferentiated Shock: Making a Difference*
- *Under Pressor! Utilizing IV Pressors in the ED*



Carolyn Sachs (1994) and Rosemarie Diaz

- *Starting Public Health Interventions in Your ED – A Panel by the ACEP Public Health Committee*

Kareem Agunbiade

- *Evaluating A Joint*
- *How to Succeed in Your First Five Years of Practice*



Tyler Barrett (2005) and Richelle Cooper (1998)

- ACEP editor's workshop - *"The Journal Wants Your Science...but Just a Little Bit. Revising a Manuscript to a Research Letter"*

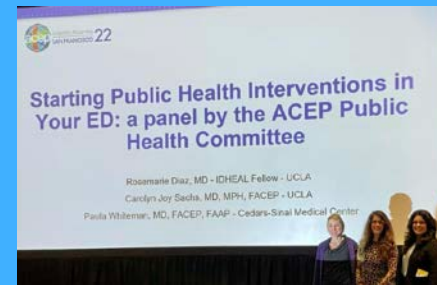
Ilene Claudius (2002):

- *Sugar & Spice & Everything is NOT Nice: Pediatric Endocrine Emergencies*
- *Metabolic Disasters in Kids - Lethal Disorders You Have Never Heard of & How to Treat Them*



Clayton Kazan (2005):

- *2022 Disasters in Review: Are We Over It Yet?*
- *Recent EMS Literature, Controversies and Evolving Concepts*
- *Teaching Others to Save a Life Until Help Arrives*



Former Informatics Fellow: Indira Gowda

- *Alarm Bells Sound, Patients At Home: Remote Monitoring in the ED*
- *Antidotes to Note Bloat: Make the EHR Work for You*
- *Decoding Devices From Door to Dispo*



Gil Shlamovitz (2007)

- *New Updates in Wound Care: What's Best?*



Jeff Tabas (1998)

- *Atrial Fibrillation 2022: Don't Miss a Beat*
- *Bundle Branch Block Unblinded - Identifying Acute MI*
- *ACLS Guidelines 2022: What's New & Why*





# More ACEP 2022

Congratulations to the faculty, alumni, fellows, residents and our undergraduate (EMRA) research volunteers who presented abstracts. **Jesus Torres, Michael Levine, Tyler Barrett (2005), and Richelle Cooper (1998) moderated abstract sessions.**



- **Zappacosta H, Bandek G, Yalzadeh Y, Yassine I, Raffman E, Cooper RJ, Mower WR.** Systematic Review of Ionizing Radiation Dose Exposure for Commonly Performed Chest Imaging Techniques in the Emergency Department Setting.
- **Gujral T, Rana S, Bui K, Factora R, Ma P, Cooper RJ, William Mower WR.** Traumatic Injury To The Posterior Fossa: A Secondary Analysis Of Demographics, Clinical Characteristics, Computed Tomography Imaging, And Outcomes.
- **Levine M,** Finkelstein Y, Yanta J, Cao D, Filip A, **Schwarz E,** Arbussattar S, William Trautman W, Cohen N, Thomas S. Caustic Ingestions: Does Intent Matter?
- **Levine M,** Brent J, Maguire B, Cohen N, Wiegand T, Vearrier D, Beuhler M, Leikin J, Wax P, Finkelstein Y. Lipid Emulsion Therapy During Resuscitation of the Critically-Ill Poisoned Patient: A Prospective Cohort Study Management of Intravenous Lipid in Overdose (MILO) study group and the Toxicology Investigators Consortium.
- **Levine M,** Cao D, **Schwarz E,** Trautman W, Pathan SA, Finkelstein Y, Filip A, Yanta J, Cohen N, Thomas S. Caustic Ingestions: Acids or Bases. Does it Matter?
- **Taira B,** Kendra Arriaga-Castellanos K, Alonso L, **Orue A,** Salazar D, Perez Y, Morales O, Tercero R. Barriers and Facilitators to Emergency Medicine Residency Program Development in Latin America and The Caribbean.
- **Nacier C,** Wilson T, George N, Lin T, Brister J, T Madsen T, Napoli A, Jenouri I, Tyminski C, **Samuels E.** Differences in Emergency Department Sepsis Care: Do race, sex, and language matter?
- **Samuels E,** Taylor R, Pendyal A, Shoajee A, Mainardi A, Lemire E, Venkatesh A, Bernstein S, Haber A. Mapping Emergency Department Asthma Visits to Identify Poor Quality Housing.
- **Berger M, Buckanavage J, Jordan J, Lai S,** Linda Regan L. Future Uses of Telesimulation: National Survey of Emergency Medicine Residency Simulation Directors.
- **Jordan J,** Weygandt P, Osborne A, Moore K. Foundations of Emergency Medicine Resident as Teacher Experience.
- **Wang J, Zhao R, Chiem A.** Peer-Instructed Teleguidance Ultrasound in Undergraduate Medical Education: A Randomized Control Equivalence Study.
- **St. Romain M,** Avegno J, **Tiao J,** Vaughn J, McInturff M, Melendez-Salgado A, Bloemer N, Grant A, Lim S, Burgess R. Impact of a Large Gathering on COVID-19 Transmission in a Community with Multiple Broad Mitigation Measures - New Orleans, Louisiana, October 18, 2021 - November 11, 2021.
- **Makda H,** Kashani S, **Kazan C, Orue A,** Torres V, Kim YS. Utilization of Advanced Providers In The Field for Medical Custody Clearance.
- **Toy J,** Bosson N, Chang A, **Haase D,** Kipust A, Korotzer L, Warren J, Kim YS, **Kazan C,** Marianne Gausche-Hil M. Short-Term Outcomes and Patient Perceptions after EMS Non-Transport During the COVID-19 Pandemic.
- **Mandeville K,** Naheedy J, **Kettler E,** Boulil Z. Presentations of Infants with Skull Fractures  $\leq 3$  Months of Age, With and Without Intracranial Hemorrhage (ICH).
- **Patel N,** Spiropoulos K, Celedon M, Fermin P, Tranquada K, Behari G, **Zhao L.** Tele-Emergency Care May Improve Access to Emergency Care Resources While Reducing Need for In-Person Emergency Department Evaluation.

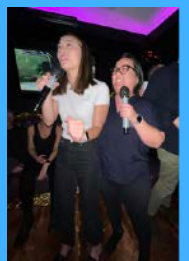
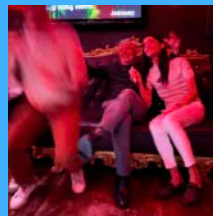
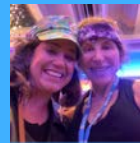
## Alumni Abstracts

- The PROCOVAXED Investigators **Rodriguez R,** Nichol G, Eucker S, Chang A, Arreguin M, Morse D, Shughart L, Pauley A, Eswaran V, **O'Laughlin K,** Chavez CL. COVID-19 Vaccine Messaging Platforms Increase Vaccine Acceptance and Uptake in Unvaccinated Emergency Department Patients: A Cluster Randomized Controlled Trial.
- **Noorvash D,** Vaughn P, **Berdahl C,** Geiderman J, Torbati S. Implementation of a Geriatric Care Coordinator (GCC) Program for High-Risk Geriatric Patients Following Emergency Department Discharge.
- **Berdahl C,** Torbati S. Frequency of discharge prescriptions known to increase fall risk for older adults: Estimates of incidence in the United States.
- **Lam A,** LJankovic L, Aharonyan L, McGroarty K, Prince M, Morris L, Stang C, **Berdahl C,** Torbati S. A Tender-Loving-Care Volunteer Program to Provide Non-Clinical, Supportive Interventions to Older Adults in the Emergency Department.
- **Berdahl C,** Shira Fischer S, Marcelino W, Ahluwalia S, Cohen C, Armstrong C, Mendel P. Dissemination of information about ivermectin on Twitter during the COVID-19 public health Emergency.
- **Hsia J,** Axteen S, **Terp S.** Characteristics of Emergency Medical Treatment and Labor Act Citations and their Association with Patient Death.
- **Molina M,** Nichol G, Eucker S, Arreguin M, Morse D, Pauley A, Chavez C, **O'Laughlin K, Rodriguez R.** COVID-19 Booster Vaccine Hesitancy in the Emergency Department.
- **Lu A, Cheng T,** Kimberg L Stark N, Lawless S, Peabody C. Developing a Survivor-Centered Emergency Department Approach to Tailored Resources of Survivors of Interpersonal Violence Acute Care Innovation Center.
- **Probst M,** Janke A, Haimovich A, Venkatesh A, Lin M, Kocher K, Nemnom MJ, Thiruganasambandamoorthy V. Development of a Novel Emergency Department Quality Measure to Reduce Very Low-Risk Syncope Hospitalizations.
- **Vongsachang H,** Sprunt L, Padilla G, **Schneberk T,** Riddell J. The Impact of an Experiential Social Medicine Curriculum in a County Emergency Medicine Residency Training Program: a Mixed Methods Study.



# More ACEP 2022 and Alumni Reunions

**THANK YOU Jen Cassidy and Matt Hill** for taking care of all of us and planning our Alumni Happy Hour and the Class of 2023 Senior Dinner.



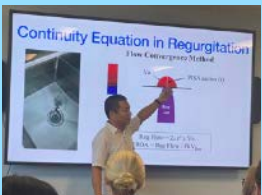
To be honest, this is why I go to ACEP - seeing so many alumni and how everyone is thriving is amazing! I am so grateful, lots of blessings - Love you all, Richelle



# Ultrasound Section Updates

The new DGSOM curriculum includes POCUS training in all four years of the curriculum. Our DGSOM graduates will be able to perform standard POCUS exams such as echocardiography, IVC, E-FAST, and US-guided PIV insertion, regardless of their specialty. We have ten sessions during the first year that are integrated with their clinical skills and anatomy courses, as well as recurrent POCUS sessions every two months as part of the Intersessions (clerkship bootcamp) weeks for the MS2 year. The MS3 year allows students to practice and teach POCUS over the entire year as part of the Longitudinal Clinical Experience and Discovery courses. Students in the MS4 year will be able to learn specialty-specific POCUS in clinical electives in EM, Anesthesiology, and IM. Emergency Medicine has been at the forefront of POCUS education at all levels of training. Thank you to all of the faculty and residents that have contributed to our mission to advance POCUS education!

Alan Chiem, George Lim, Kareem Agunbiade, and Amir Tabibnia all travelled to Santiago Chile for some ultrasound teaching at Conceptos.



# EMIG Wilderness Interest Group

Mary Sun (2013) fresh off completing her wilderness fellowship taught the DGSOM EMIG wilderness IG with the help of Nate Coggins (2023), Missy Brown (2025), and Melissa Baker (2026).



# All LA Conference

All LA conference (our joint conference with Harbor UCLA EM residency and USC EM residency) is back in person, and Harbor UCLA hosted September 2022 featuring a tax themed day including lectures by Michael Levine and escape rooms.





# Happy Halloween UCLA Family !



Hollie Sandlin (2014) and family.



Erik Schraga (2006) and



Mike Merjanian (2019) and Olivia



Mary Sun (2013) and the Hsia family



Jessa Baker (2021), Paul and Mia



Brandon Firestone (2017) and family



Steff Brenman (2017) wife Liz, and Holden



Gil Shlamovitz (2007), Tomer, Ben and Maya



Ali Hussain (2010)



Wendy Lin (2002) and family



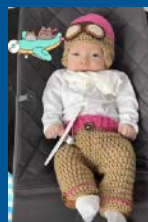
Niko Pascua (2023) as cousin Itt.



Angela Brown (2016), Matt, Sophie and Mackensie at Disneyworld for Halloween



Tola Johnson (2012), Nick Miniel (2011), Remy and Quinn



Zoe as a pilot like her mother Carolyn Gates (2014)



Emily Huang (2013) and Aspen's first Halloween



Michelle Brennan (2022) peace-out at work



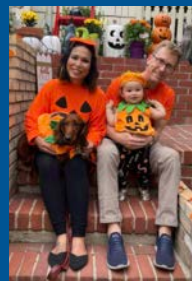
Noah Sugerman's (2016) kids



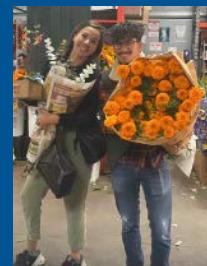
Cherokee Sauer (2026), Kevin Mauerman (2025) and Matt Hill at National Orange Show Fair



Brian and Sam Kadera (2013)



Erica Kiemele-Giss and family



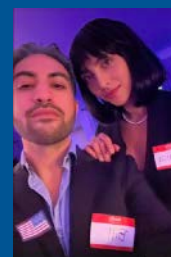
Cristy Villalpando (2025) and Christian Hernandez (2025) at the downtown flower mart of Die De Los Muertos



Reza Hessabi (2024) & Hyung



Ariel Wu (2025), Cristy Villalpando (2025), Jackson Kloor (2024), Taylor James (2024), Charlene Gaw (2024), Erich Weishofer (2024), Christian Hernandez (2025), Daniela Alarcon (2025), and Jen Cassidy.



Tiglath Ziyeh (2024) and AJ (2024)



Haig Aintablian (2022)



# Wellness Committee & More

PGY2 and PGY3 day (the interns get bootcamp together and the r4s get ACEP together so do not feel bad).



Post Thanksgiving Annual Bavolek Bacon Bash



Thank you again to Rebecca and Nate Bavolek (and Julianna and Ryker) for hosting the residency Christmas Party and gift exchange.



A big thank you to everyone who donated to our 3 families in need in the Olive View Adopt a Family program this year, and especially to Anna Jackanich "AJ" (2024), who did an amazing job rallying the residents for their donations and purchasing many items for the families. All together, residents, OV faculty and NPs collected more than \$2500 in cash and gift items.



# Meet our New Fellows Coming July 2023



## National Clinician Scholars Program and IDHEAL Fellow - Hurnan Vongsachang

Originally from San Diego, California, Hurnan completed her undergraduate studies at Harvard University. She attended UC Riverside for medical school and also completed her Masters of Public Health from the Harvard TH Chan School of Public Health. Currently, Hurnan is finishing her training at the Los Angeles County + University of Southern California Emergency Medicine Residency Program. Hurnan is looking forward to pursuing Fellowship training through the National Clinician Scholars Program in conjunction with IDHEAL-UCLA to further address disparities related to mental health, substance use, and homelessness from the emergency department. During her free time, Hurnan loves to run, bike, hike, explore all the great eateries in Los Angeles, and last but not least, catch up on the latest Netflix chick flicks!

## National Clinician Scholars Program Fellow Hashem Zikry

Hi all-- my name is Hashem Zikry. I am currently finishing up my fourth year of residency as a chief resident at Mount Sinai in New York City. I am a lifelong New Yorker and have spent 30+ years in New York City. I am going to be joining UCLA as a National Clinical Scholar Fellow where I hope to continue working on Healthcare Preparedness and specifically how to economically incentivize disaster preparedness. I have always been an outdoor kid at heart, love being outside at any opportunity and am an avid runner. Aside from that, I am passionate about Thanksgiving food, reading, coffee, octopuses and dinosaurs. My partner Katie and I cannot wait to move out to California and meet all of you!



## UCLA Administration Fellow: Faraz Khan

Faraz was born and raised in Southern California. He attended UCLA for college where he majored in Psychobiology and Economics. He then went to UC Irvine for medical school and also completed his MBA there. He is currently at Kings County Hospital in Brooklyn, NY for residency where he works closely with admin and is in the Healthcare Administration Scholarship Program. He is excited to now come back home and join the UCLA EM Family as a part of the Admin Fellowship. In his free time, he enjoys soccer (go Chelsea!), food, family, and traveling!

## Education and Simulation Fellow - Mike Messina

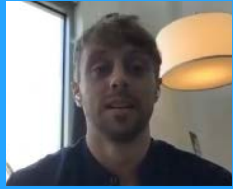
Hello, my name is Mike Messina, and I am very excited to be joining the UCLA EM family in July as a Medical Education fellow. I am a born and raised Ohioan, originally from Cleveland. I went to undergrad at THE Ohio State University (Go Bucks) and stayed locally in Columbus to complete medical school at Ohio University. I then made the big move out to LA, where I have spent the past four years as a resident at LAC + USC. Outside of the ED, I enjoy spending time with my partner Brett and our two dogs, taking Strand walks in Hermosa where we live, cooking, traveling, or trying new restaurants. I am looking forward to joining this incredible program and educational team for the next two years!





# Alumni and Guest Lecturing

## Alumni Airway Cases -

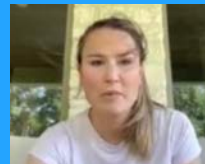


A series of scary airway cases from alumni served as jumping off point for some critical care learning. Thanks for the case presentations **Tyler Haertlein (2020)**, **Randy Lee (2020)**, and **Jimmy Murphy (2022)**.



**A Most Interesting Case** - Alumni discussing a challenging case they have encountered and delivering some pearls for community practice:

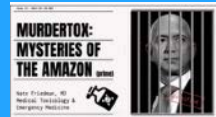
**Cate Yaggi (2020)** presented a case of cardiac contusion presenting as persistent vomiting after a football tackle in a student athlete.



**Aws Al-Abdullah (2020)** presented a case of chest pain in a patient with SOB, altered, atrial fibrillation with LBBB and possibly recent AMA from an outside hospital 2 days ago, in acute heart failure and VT storm.

## Alumni Guest Lecturing

**Nate Friedman (2021)** “MurderTox” part 1 and part 2..... Murder based on things you can mostly find to buy on Amazon.



**Cameron Harrison (2021)** “ECMO in the ED”

**Anthony Catalano (2017)** “Retrograde Intubation”



**Great Journal Clubs at Chez Schriger and Chez Hendey this year.**



**ALUMNI** - Come teach at our conferences: If you will be in Los Angeles and want to lecture at one of our conferences, or teach a small group, email [Richelle Cooper \(1998\)](#), and I will connect you with the APD team.



# Life Around and Out of Town

Getting back to some normalcy, it has been great to see people outside our bubble, try some new experiences and to see alumni get together:

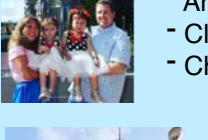
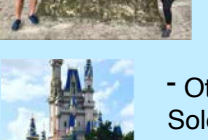
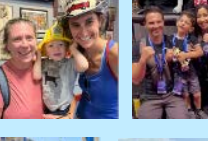
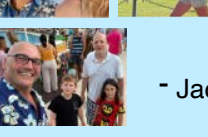
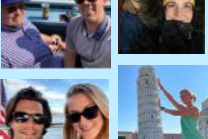
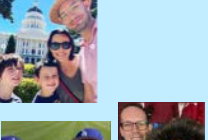
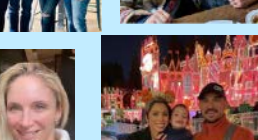
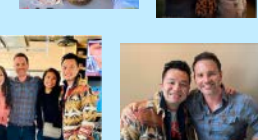
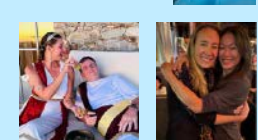
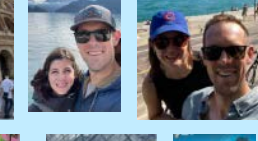
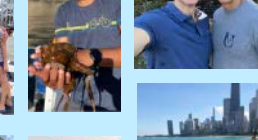
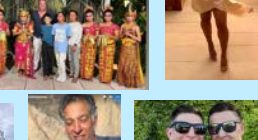
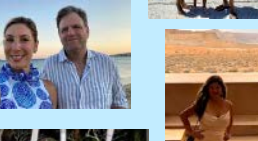
- Mikaela Finnegan (2023) climbed the Eastern Sierra Mountains.
- Amanda Amen (2024) and her fiancé Ali travelled to Greece for a wedding.
- Bryan Merte (2024) travelled to Paris.
- Eric Snyder (2008) took in a Dodger game, then took a trip with his children to Niagara Falls and Cooperstown to the Baseball Hall of Fame.
- Angelique Campen (2000) went to Europe - Italy, France...
- Erica Kiemele-Giss took a family vacation to Hawaii.
- Anthony Jourdan (2026) vacationed in Saint Lucia.
- Judy Choe and Matt Waxman (2007) went hiking in Yosemite National Park.
- Sarah Seresinghe (2026) went to Washington and saw the view from the Space Needle.
- Annie Hoang (2026) went to Las Vegas.
- Charlene Gaw (2024) vacationed in the Scottish Highlands.
- Annette Dekker and Kimon Ioannides vacationed in Europe.
- Kelsey Kneisley (2024) vacationed at Jasper Provincial Park, hiking at Peyto Lake in Alberta Canada.
- Erich Wieshofer (2024) vacationed in Cape Breton, Nova Scotia.
- Brandon Endo (2018) went Salmon fishing in Alaska.
- Torrence Tran (2025) visited Disneyland.
- Zainab Ahmed (2024) travelled to Maine.
- Jennifer Cassidy was in NY for the EMARC/CORD board meeting and visited with Jimmy Murphy (2022).
- Tony Fredericks (2023) travelled to New Mexico to visit his partner doing fellowship there, and ran into David Schriger on his birthday trip to the area.
- Greg Hendey (1993) and wife Lisa got out to a Dodger game.
- Several people independently enjoyed the Beachlife festival including Rebecca Bavolek, Anna Yap (2022) in an amazing dress she knitted for herself, and Michelle Brennan (2022).
- Angelique Campen (2000) enjoyed the Life is Beautiful festival. Putting Barbie to shame!
- Niko Pascua (2023) and Thomas travelled to Austria.
- Wonki Chae and family vacationed in Hawaii.
- Tiglath Ziyeh (2024), AJ (2024) and her partner vacationed in Spain.
- Annie Hoang (2026) explored Los Angeles, taking in an exhibit at the Broad.
- Dan Furoy (2011) and family traveled to Louisiana and took in a football game as well.
- Noah Sugerman (2016) traveled to Florida.
- Leanne Cook (2024) and Bryan Merte (2024) traveled to Argentina.
- Micaela Finnegan (2023) traveled to Greece.
- Angelique Campen (2000) fished off the coast of Mexico.
- Kevin Mauerman (2025) went to Las Vegas.
- Medell Briggs Malonson traveled to Kenya.
- David Talan (1986) and Christian Hernandez (2025) went to Wisconsin and took in a Packers football game at Lambeau stadium.
- Carolyn Sachs (1994) traveled to Peru.
- David Morales (2018) and Kat went to Steamboat Springs Colorado.
- Agatha Brzezinski (2023) and Riche went to Poland, Austria, and the Czech Republic, where they visited family, museums, castles, and plenty of Christmas markets.
- John Mark Sawyer (2023), Anthony Fredericks (2023) went skiing with Chelsea Robinson (2022).
- Brian and Sam Kadera (2013) vacationed in Whistler.





# Alumni Getting Out and Getting Together

- Many of the new grads took trips to Europe- Lizzie Ferreira (2022) travelled to Portugal, Alex Daguanno (2022) went to France, Michelle Brennan (2022) went to the United Kingdom and France.
- Hannah Spungen (2022) relaxed at the Salt River Recreation center.
- Chelsea Robinson (2022) went hiking and backpacking, enjoying some of the time off following residency completion.
- Ali Hussain (2010) and family got away at Jamison Lake.
- Katy Kinsella (2010) and family at Lake Tahoe area.
- Class of 2020 Aws Al-Abdullah, Randy Lee and Tyler Haertlein came from Arizona, Washington DC, and Florida to Los Angeles to catch up, showing their UCLA pride.
- Mary Sun (2013) exploring more wilderness, prehistoric at the museum.
- Tola Johnson (2012) and Nick Miniell (2011) celebrated 8 year wedding anniversary, 10 years as a couple with their kids in Greece.
- Priscilla Hanudel (2012) vacationed at Amangari, Utah.
- Carter Wystrach (2017) visited back in California and took in a Dodger Game, and on another trip he and Lia caught a CalBear game.
- Tiffany (Hackett) Ferreira (2004) and family vacationed in Greece.
- Wendy Lin (2002) and family travelled to Singapore and Bali.
- Gil Shlamovitz (2007) Tomer and kids travelled to Cabo San Lucas.
- Jackie Kurth (2020) and vacationed in Massachusetts.
- Andy Shen (2003) and family took a cruise to Alaska.
- Hannah Wallace (2019) and Ali McLeroy-Wallace (2020) vacationed in Italy.
- Holly Sandlin (2014) and family went to Alaska.
- Steff Brenman (2017), wife Liz and Holden went to Boston.
- Ali Hussain (2010) explored some sea life at Santa Cruz Island.
- Chris Belfour (2015) and Michael vacationed in Napa.
- John McWhorter (2013) vacationed in Rome.
- Katy Kinsella (2010) and family vacationed with family experiencing 30A!
- Mike Merjanian (2019) and Kristen took Olivia to their first of undoubtedly many Disneyland visits, the happiest place on earth.
- Brian McNamara (2015), Veronica, and Greyson checked out the Disney d23 expo.
- Carter Wystrach (2017) and wife Lia went to Chicago, and then a little farther with a trip to Switzerland.
- Hollie Sandlin (2014) and her family enjoyed the state fair.
- Varun Shahi (2020) and Pallvi honeymooned in Italy.
- Jake Wilson (2018) traveled to Chile and visited Parque Nacional Laguna San Rafael.
- Nate Friedman (2021) and Audrey traveled to Paris, France.
- Jess Oswald (2018) and husband John were on a fishing trip that overlapped with Brandon Endo (2018) and Jake Wilson's (2018) Alaska fishing trip.
- Tiffany (Hackett) Ferreira (2004) spent her birthday with Pablo and friends in Tuscany.
- Aws Al-Abdullah (2020) and Sophia traveled to Costa Rica.
- Natalie Shum (2007) took a trip to Seattle and caught up with her residency classmate Kelli (McCartan) O'Laughlin (2007).
- Other alumni caught hanging out - Joe Chan (2015), Brian McNamara (2015) and Tom Solomon (2014).
- Angela Brown (2016) and family went to Epcot Center.
- Claudie Bolduc (2021) traveled to New York and visited Naseem Moridzadeh (2021)
- Chris Belfour (2015) and Michael traveled to Paris.
- Ali Hussain (2010) caught some of the first snow at Tahoe with family.
- Tiffany Ferreira (2004) and Ritu Malik (2003) got together over the holidays.
- Maria Conradt (2019) and family celebrated the holidays at Disneyland.
- Kelli O'Laughlin (2007) and family vacationed at Schweitzer Mountain in Idaho, along with big sister Kathleen Myers (1994).





# Growing Families - Congratulations to Everyone!



Rebecca and Nate Bavolek celebrated their 23rd wedding anniversary.



Pam Dyne (1995) and Barry celebrated 35th wedding anniversary.

Jared Marshall (2023) and Alanna got married, and her co-chiefs were able to celebrate with them.

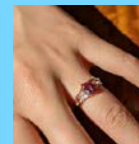


Reza Hessabi (2024) and Huong got married, with lots of family and classmates in attendance.

Vanessa Franco (2017), husband Ranmal, and big sisters Eliya and Noralie welcomed Reia.



Jackie Shibata welcomed Keana "Kiki" and her big sister Naomi is very excited.



Anna Yap (2022) and Michael got engaged, while on vacation in Hawaii. A surprise he coordinated with her parents who participated in the proposal.



Vanessa Kreger (2020) and Brett welcomed their daughter Esme Margaret.



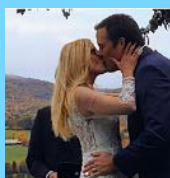
Britt Guest (2019) and Flo welcomed Luca Josef.



David Talan (1986) welcomed a new fur baby, Franky



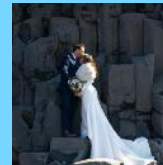
# Alumni Family Updates - Congratulations to Everyone!



Drew Seefeld (2009) and Sharon got married.

Allison Santi (formerly Cousineau) (2005) got married to Chris

Brian Truong (2018) and Andie Takemoto (2018) got married.



Brian McNamara (2015) and Veronica eloped with a wedding in Iceland!



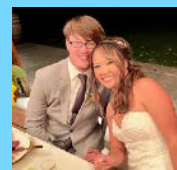
Varun Shahi (2020) and Pallvi Poplin got married.



Jackie Kurth (2020) and Andrew celebrated their 1 year wedding anniversary.



Thomas Hemingway (2006) and Brooke celebrated their 24 year anniversary.



Vicky Nguyen (2016) and Alex got married with many of the 2016 class in attendance to celebrate.



Ryan Kunitake (2021) and Jen had a wedding celebration (after their smaller covid wedding) with many UCLA alum sharing the joy with them.



Aws Al-Abdullah (2020) and Sophia are expecting their first child this spring.



Josh Baugh (2019) and Allie welcomed son Samuel.



Carolyn Gates (2014) and Adam welcomed baby Zoe.



Greg Tong (2020) and Seema welcomed Rhea.





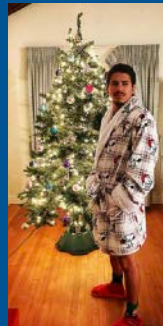
# Happy Holidays UCLA Family !



Greg Hendey (1993)  
and Lisa



Niko Pascua (2023)



Christian  
Hernandez  
(2025)



Rebecca Bavolek, Nate, Julianna and Ryker



Angela Brown  
(2016), Matt,  
Sophie and  
Mackensie



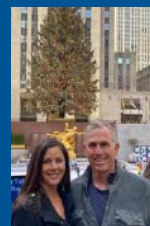
Woody Peeples (1996)



Kelly Painter  
(2004), Will  
and Jax



Chelsea  
Robinson  
(2022)



David Talan  
(1986) and  
Shar



Wendy Lin  
(2002) and  
family



Ana Lopez  
O'Sullivan (2013)  
family xmas



Kevin Mauerman  
(2025), Missy Brown  
(2025) and Christian  
Hernandez (2025)



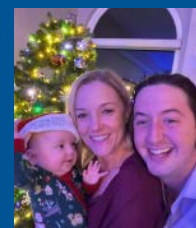
Thomas  
Hemingway  
(2006)



Emily Huang  
(2013),  
Wade and  
Aspen.

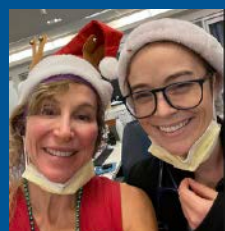


David Morales  
(2018), Kat  
and niece.



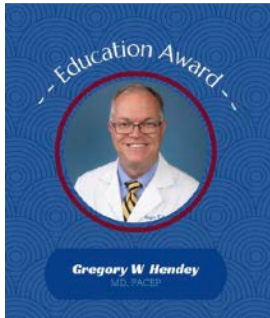
Carolyn Gates  
(2014), Zoe and  
Adam.

Thanks to everyone who worked in the ED on the holidays!





# KUDOS to Our Amazing Faculty, Residents and Alumni



The California Chapter of the American College of Emergency Physicians (Cal ACEP) selected **Greg Hendey (1993)** as the 2022 recipient of the Chapter's **Education Award**.

This award is given to a member who has made an outstanding contribution to the education of

emergency medicine residents or who has made a significant contribution to emergency medicine research and education. He received this award for his impact on a generation of emergency physicians who trained at his residency programs and his career long dedication to learning.



The California Chapter of the American College of Emergency Physicians (CalACEP) selected **Kenneth Kim (2025)** as the 2022 recipient of the Chapter's **CalEMRA Award**.

This award is given to an outstanding resident in recognition of their exceptional academic and/or advocacy efforts, or for exceptional efforts through, for, or on behalf of CAL/EMRA. Kenneth was recognized for his leadership as the first Chair of the CalEMRA Medical Student Council and for his work representing California emergency medicine residents within EMRA nationally.

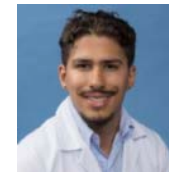


**Medell Briggs-Malonson** is the new Co-Chair of the federal [Health Information Advisory Committee \(HITAC\)](#). She was initially appointed last year by HHS Secretary Xavier Becerra to serve on the committee. Beginning Jan 1, 2023, she will be the co-chair of the entire committee for the next 3 years.



The Graduate Medical Education Office recognized two of our residents for their outstanding leadership and vision for their work in the UCLA Minority Housestaff Organization (MHO). The UCLA MHO is a housestaff-driven organization dedicated to the mission of excellence through diversity. The organization receives administrative and financial support from GME, UCLA Health, and DGSOM to oversee a six figure budget in support of recruiting, developing, and advancing historically under-represented physicians as well as improving access and quality of care for all patients at UCLA.

**Christian Hernandez (2025)** is an executive MHO board member who was recognized for his leadership to advance the URM trainee program at UCLA by building social networks through faculty and housestaff mixers, organizing the annual [holiday gala](#) celebrating excellence in the EDI space, a quarterly newsletter of housestaff achievements, as well as a new housestaff conference focused on career development and advancement called [Pathways to Practice](#).



**Chase Richard (2023)** is an executive board MHO member who was recognized for using his leadership to advance pipeline efforts to assist in recruitment, retention, and mentorship of historically under-represented in medicine students. He organized the fourth annual [Road to Residency](#) conference, a one-day conference for medical students nationally to participate in workshops, resident and faculty panels, as well as mock interviews, which supported nearly 200 medical students. He also hosts quarterly workshops for DGSOM and Charles Drew medical students on how to succeed in medical school, works closely with GME in recruitment efforts, has partnered with the DGSOM's Student National Medical Association and Latino Medical Student Association chapters, and represented our institution nationally to recruit the next generation of physician innovators and leaders.



# More Great Kudos



Congratulations to Baxter Larmon on receiving the National Association of Emergency Medical Technicians (NAEMT) Rocco V. Morando Lifetime Achievement Award for 2022. Bax has dedicated his career to advancement and professionalization of emergency medical services. He is both the founder of the UCLA Center for Prehospital Care and the Prehospital Care Research Forum. He is a Professor at the UCLA David Geffen School of Medicine and has more than 40 years of experience with emergency medical services. He has spoken at more than 400 EMS conferences, has written more than 60 publications in emergency medicine and is one of the pioneers the field of prehospital medicine. Perhaps more importantly than his numerous accomplishments, is that he is an A+ human being and a great friend and colleague to all of us. He was presented the prestigious award at the 2022 International Scientific Symposium at EMS Expo Conference in Orlando, Florida.



**Natasha Wheaton** has been named an Assistant Dean for Curricular Affairs at the David Geffen School of Medicine. As a key member of the HEALS curriculum education leadership team, Dr. Wheaton will work closely with the Associate Dean for Curricular Affairs, the Assistant Dean for Clinical

Education, faculty and students to assure that all curricular activities reflect the vision and mission of DGSOM. Dr. Wheaton's work will focus on strengthening and building interprofessional education activities throughout all 4 years of medical school. In addition, she will play a major role in developing, deploying and optimizing the third-year Discovery experience together with the current Discovery team.

The UCLA Ronald Reagan I Olive View Faculty Teaching Award recognizes exemplary involvement in resident education, both at the bedside and through participation in didactic sessions. The faculty who received the most resident votes for the 2022-2023 UCLA/Olive View Faculty Teaching Award for the first half of year were:

**Vanessa Franco, M.D. PhD at UCLA & Steven Lai, M.D. at OVMC**



**Jessica Faiz and Josh Tiao**

both presented at the Annual National Clinician Scholars Program meeting in San Francisco. Jessica Faiz presented *"Frontline Perspectives on Barriers and Facilitators of Ambulatory Clinical Access for Patients Insured with Medicaid in an Academic Health System."*

Josh Tiao presented *"Parks after Dark: Can Parks-Based Programming Decrease Community Violence in Neighborhoods with High Violence Scores."*



**Richelle Cooper (1998)** was appointed Annals Executive Deputy Editor.



**David Talan (1986)** and **Greg Moran (1992)** travelled to Atlanta to visit the CDC with the 5th consecutive renewal of the CDC grant for the EMERGENCY ID NET. That is more than 20 years of continual support of the multi-center network! The CDC has also funded the project PREVENT and COVERED studying covid and healthcare workers. A new study for the network will be surveillance of Monkey Pox. The photos show David and Greg in the 1990s when they were first funded and again on their most recent visit, including Nick Mohr from University of Iowa.





Hannah Spungen and David Schrager were able to walk around Chicago and the Ravinia Festival.

## RESEARCH NEWS

### Clinicians who responded to recent mass shootings release recommendations for an effective healthcare response in the future

EMS clinicians, emergency physicians, and surgeons who responded to six recent mass shootings publish consensus recommendations and lessons learned in the Journal of the American College of Surgeons

July 18, 2022

**Craig Goolsby (2008)** while at Uniformed Services University (USU) in Bethesda, Maryland hosted a consensus conference about the healthcare response to mass shootings. The conference brought together a broad group of stakeholders including multiple federal agencies, surgeons, emergency medicine and the prehospital community. The main paper from this event describes consensus recommendations for healthcare response. The paper published in the Journal of the American College of Surgeons was also featured in the inaugural episode of the Journal of American College of Surgeons podcast "The Operative Word"

[Mass Shootings in America: Consensus Recommendations.](#)

## MEDICAL NEWS & PERSPECTIVES

The [press release](#) resulted in other interviews and podcasts including with [JAMA](#).

Physicians and EMS Who Responded to Mass Shootings Develop Consensus Recommendations for Improving Care

Kate Ruder

Audio: Approaches to Reducing Firearm Violence

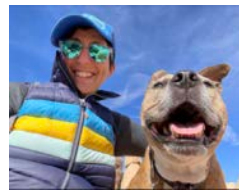
Video: Approaches to Reducing Firearm Violence

Congratulations to the team, the Network for Emergency Care Clinical Trials:

[Strategies to Innovate Emergency Care Clinical Trials Network \(SIREN\)](#)

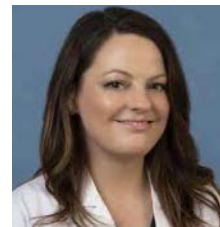
grant renewal for the hubs were announced and UCLA was funded for another 5 year cycle. Our structure includes multiple PIs at UCLA (**Kabir Yadav, Jeff Saver, Marianne Gausche-Hill, Sidney Starkman, Julianna Tolles and Richelle Cooper (1998)**), and isub-Hubs at Cedars Sinai Medical Center, University of Colorado, UCSD, UCI and new member UNLV. OVMC is now one of our core sites with **Breena Taira and Jesus Torres**. Other hubs include (Chicago, Pittsburgh, WashU, Yale, Duke, Hopkins, Minnesota, Oregon Health, Temple, Virginia Commonwealth, Wayne State) and the Northern California Consortium with UC Davis and UCSF, called Norcares with **Robert Rodriguez (1994)** as Co-Pi for the hubs.

UCLA residents and faculty can participate in the working groups - check your mednet email for information from Ileana Grunberg and Sid Starkman or contact Richelle Cooper.



**Liz Samuels** received her first R01 grant from the CDC, for her project: Emergency department community health worker-peer recovery navigation for linkage to recovery: A

mixed methods evaluation. The study will be conducted at Brown where Liz was faculty before formerly joining our group this January 2022, and is a sequential, mixed methods, type one hybrid implementation study of an emergency department community health worker peer recovery specialist program to evaluate program effectiveness and identify potential causal mechanisms of program effectiveness.



Congratulations to **Cat Weaver (2017)** who was again awarded a grant from the CalBridge Behavioral Health Navigator Program to support continued Substance Use Navigators at both Ronald Reagan UCLA and Santa Monica UCLA Emergency Departments for another year.



Congratulations to **Sophie Terp (2012)** who received her first RO1 - "Assessing the Impact of Enforcement of EMTALA on Access to, Disparities in and Quality of Emergency Care". The goal of this project is to evaluate whether EMTALA enforcement is associated with changes in measures of access to or quality of emergency care for vulnerable populations.

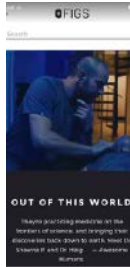


**Jessica Faiz** was awarded a \$30,000 Locally Initiated Project (LIP) grant through the VA Center for the Study of Healthcare Innovation, Implementation & Policy (CSHIIP) for her project "Assessing Disparities in VA TeleEmergency Care." The overall aim of this proposed work is to assess user characteristics and utilization of the VA Tele-EC program, and to identify potential racial and ethnic disparities in utilization.



# Laudations

**Haig Aintablian (2022)** was asked to model for figs scrubs ([Check out the ad](#)) for their Space campaign, photo shoot at Griffith Observatory.



UCLA is featuring Haig in their PAC-12 football commercial used during every game for the upcoming football season.

He was the first highlight in “UCLA is Here” campaign highlighting the innovative training.



At the **ACEP Teaching Fellowship** this summer, **Caroline Humphreys (2021)** presented her fellowship project and new education fellow **Ashley Vuong (2022)** and resident **AJ (Anna Jackanich) (2024)** participated in the sessions.



## Seeing the Unseen: Human Trafficking in the Emergency Department

**Allison (Cousineau) Santi (2005)** continues to be on the HEALtrafficking speakers bureau nationally. She worked with a group of ACEP women physician leaders in trafficking on a TIPS grant to produce [educational modules on human trafficking](#), now published and available for CME credit through ACEP.

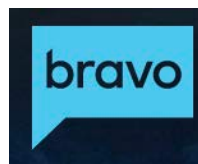


**Evan Schwarz** received the Missouri Medicine Service Award - this is the journal for the Missouri State Medical Association.

**UCLA Health workers protest for improved working conditions, more equitable pay**



Several residents demonstrated for better working conditions for all house staff.



## Look Who's on Reality TV

### BELOW DECK



If you want a little reality TV check out Bravo Below Deck Season 10.

Touring around St Lucia on a super yacht includes our very own alumna **Sam Kadera (2013)** **Tola Johnson (2012)** and **Hollie Sandlin (2014)**.





# In the Media

**Priscilla Hanudel (2012)** featured in numerous news broadcast, including KABC7 news in Los Angeles.



**Matt Waxman (2007)** continues to be a featured expert for Fox News in Depth.



**Claudie Bolduc (2021)** featured with Dr. Mark Siegel from NYU discussing care on the frontlines with COVID, Monkeypox, etc live on Sirius XM station Doctor Radio.



UCLA Health  
Connect. Share. Transform. (<https://connect.uclahealth.org/>)

UCLA Homeless Healthcare Collaborative brings critical services to Los Angeles' unhoused population  
By Jocelyn Apostola Schlessberg • July 21, 2022

UCLA homeless healthcare collaborative led by **Cat Weaver (2017)**, and our former EM nurse Marcia Santini were featured in a [UCLA news piece](#).

She and **Medell Briggs-Malonson** were also featured in a [UCLASpark Instagram](#) posts. UCLASpark links to UCLA's crowdfunding efforts.



**Anthony Cardillo (2006)** continues to provide medical advice on KABC7 Los Angeles each week, discussing COVID and monkeypox and answering viewer questions. Including addressing issues of heat illness during the historic September heat wave in Los Angeles.



**Angelique Campen (2000)** continues her instagram posts and public education. She has been featured on local news broadcast such as Channel 2 in Los Angeles discussing Monkey Pox, and also participating in Facebook live educational broadcasts sponsored Providence St Joseph. She has also been on FOX 11 news with Hal Eisner in Depth.



**In Depth: Biggest threats of holiday season**  
By Hal Eisner and Nicholas Greitzer  
Published December 13, 2022 1:29AM | In Depth  
FOX 11



**In Depth: Biggest threats of holiday season**  
The holiday season is upon us, a season of cheer, gift giving, and time spent with family. But this year, threats lurk around every corner. This week on "FOX 11 News In Depth," Hal Eisner explores the best ways to keep yourself and your loved ones safe.



**Anna Yap (2022)** was featured in an ad campaign for California's Proposition 1 which enshrines reproductive rights into our state constitution. She posted a few behind the scenes looks of the hospital set during filming. She was featured in a day in the life video for the AMA during Women in Medicine Month, featured in a Medpage on daylight savings, and then featured in an interview and fireside chat about storytelling in medicine with a social media shout out from the CMA.



California Medical Association @CMAAdocs • Oct 23  
Thank you to Dr. @AnnaYap & @EsilvermanMD for a chat at #CMAHOD about the primal experience of oral storytelling and amplifying the tapestry of physician voices through @TheNocturnists podcast!



**Greg Moran (1992)** was featured on a [No on 29 advertisement](#).

**Christian Hernandez (2015)** was featured on an instagram live video post- a day in the life of for the Midwest LMSA during Hispanic Heritage Month. Check it out @lmsamidwest.

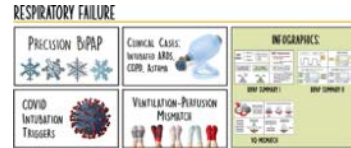




# Kudos to our residents, fellows, faculty and alumni



**Sara Crager (2015)** launched her own educational website [ICUedu](https://www.icuedu.com). She launched the site to further hone her teaching. This is education for all of us, it is not ICU care per se, in fact she aims to help us all be better at critical care and resuscitation when there is not an intensivist. The site has core content lectures and podcasts. Check it out!



Received: 6 August 2022 | Reviewed: 23 September 2022 | Accepted: 25 September 2022  
DOI: 10.1111/ace.14805

## CONSENSUS CONFERENCE

**Race, racism, and antiracism in emergency medicine: A scoping review of the literature and research agenda for the future**

Anna Darby MD<sup>1</sup> | Emily C. Cleveland Manchanda MD, MPH<sup>2</sup> | Hannah Janeway MD MS<sup>3</sup> | Shamsher Samra MD, MPH<sup>4</sup> | Marquita Norman Hicks MD, MBA<sup>4</sup> | Ruby Long MD<sup>5</sup> | Katrina A. Gilson MD, MPH<sup>6</sup> | Anita N. Chary MD<sup>7</sup> | Brenda A. Adjei EdD, MPA<sup>8</sup> | Kajal Khanna MD<sup>9</sup> | Ava Pierce MD<sup>10</sup> | Sheri-Ann O. Kaltiso MD<sup>11</sup> | Sophia Spadafora MD<sup>12</sup> | Jennifer Tsai MD, MEd<sup>13</sup> | Annette Dekker MD<sup>14</sup> | Molly E. Thiesen MD<sup>15</sup> | Jordan Foster MD<sup>16</sup> | Rose Diaz MD<sup>17</sup> | Mikaela Mizuno BS<sup>18</sup> | Elizabeth Schoenfeld MD, MS<sup>19</sup>

Several UCLA EM faculty, fellows and alumni led the SAEM consensus conference on racism in 2022 and

subsequent [report](#) of the literature review. Much to be done. Great work **Anna Darby, Hannah Janeway, Shamsher Samra (2017), Annette Dekker and Rose Diaz!**

**David Talan (1986)** reported on the COVERED study in a recent [ACEP Now](#) publication.



## Emergency Medicine News

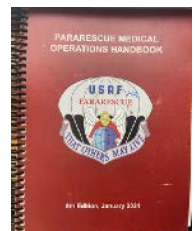
THE MOST TRUSTED NEWS SOURCE IN EMERGENCY MEDICINE

### FIRST PERSON

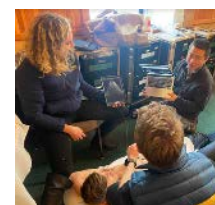
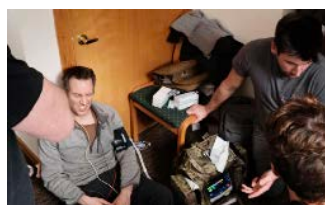
**It's Time to Ask Patients to Quit Social Media**

BY JACOB LENTZ, MD

**Jake Lentz (2019) published a paper in EM News** - about social media and the impact on patient anxiety.



**Matt Waxman (2007), Alan Chiem** and OV Pharmacist **Nikki Arab PharmD** joined US Airforce Pararescueman and UCLA EM Alum **David Haase (2002)** for the 131st Rescue Squadron Annual Medical Update in Lake Tahoe California. Matt Waxman lectured on tropical diseases relevant to military deployments including malaria, typhoid and dengue. He also ran a trauma skills assessment station focusing on blast injuries. Alan Chiem taught hands on point of care ultrasound skills to the air force special operations community and lectured in physics. Nikki Arab lectured on antibiotic use during deployments and ran a skills station with David Haase on sepsis.



# Look Who's Talking

## Medell Briggs-Malonson

- Hosted the first UCLA Health Biodesign TechQuity Accelerator Demo Day.



## Anna Yap (2022)

- Grand Rounds at Loma Linda University on the new 2023 EM Documentation Guidelines.



## Michael Levine:

- At the Total Tox Course sponsored by the American College of Medical Toxicology, "Envenomations."
- Guest Lecturer at the UCSF Division of Medical Toxicology "Bupropion and other Drug Induced Seizures."
- For the American College of Medical Toxicology's Board Review Course, "Envenomations," and "Metals and Metalloids."



## Sara Crager (2015)

- As part of EM:RAP GO Sara lectured in Brazil as part of "Teaching how to Teach" workshop
- At the [ResusX conference](#) she gave four lectures: "Ventilator Alarms: Useful Not Just Annoying!," "How to Pick Your Pressor," "Reframing Our Approach to Shock," and "Unstable A-fib"

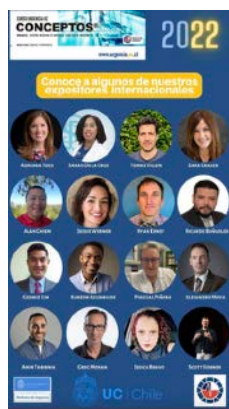


## Jackie Shibata

- Taught at the two day ultrasound course at the [Original EM Bootcamp conference in Las Vegas](#)



At the Conceptos Conference in Santiago, Chile -



**Greg Moran (1992)** - "Apendicitis: Antibióticos VS apendicectomía" or "Appendicitis: Antibiotics VS appendectomy" and "Profilaxis posterior a la exposicion para ITS" or "Post-exposure treatment of STIs"



**Sara Crager (2015)** - "Al rescate del ventriulo derecho" or "Rescuing the Right Ventricle" and "No son sólo para modest: Alarmas del Ventilado" or "Ventilator Alarms: Useful Not Just Annoying!"



**Alan Chiem, George Lim, Kareem Agunbiade, and Amir Tabibnia** taught ultrasound at the course.



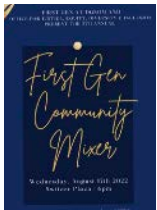
**EM:RAP GO** with a teaching workshop.





# Great Work!

UCLA Minority Housestaff Organization has held several social events, opportunities for mentorship and allyship, and is providing new opportunities with pilot grants for research projects and travel grants. **Reza Hessabi (2024)** is co-president, **Chase Richard (2023)** is part of the leadership of the Community Investment and Recruitment Committee, **Daniela Alarcon (2025)** is part of the leadership of the Health System Equity Committee, and **Christian Hernandez (2025)** is part of the leadership of the Community and Professional Development Leadership Committee.



**Natasha Wheaton** held a key role at the [DGSOM Class of 2026 White Coat Ceremony](#), leading the students in reciting the [UCLA Medical Oath](#).



**Rose Diaz** hosted a laceration repair workshop and career development talk at the Women in Medicine Conference sponsored by Mi Mentor at UC Davis in November 2022.

Rose also noted a career day workshop for a local Girl Scout Troop. Almost all the girls were young Latinas who were so excited to hear about a career in medicine.



Check out the new live streaming events on EM:RAP - UC Maximus for some great urgent care pearls and EM Grand Rounds, featuring many alumni including **Mel Herbert (1995)** and **Britt Guest (2019)**. Viewer participation quizzes included.



## WANTED: UCLA DGSOM Preceptor-Coaches



**Tahlia Spector (2005)** is the Inaugural Director of the Longitudinal Clinical Experience (LCE) for UCLA-DGSOM, and she along with site Directors at our major affiliates actively recruiting UCLA EM Preceptor-Coaches as well as (IM, FM, and Peds) and Specialist Faculty to mentor and coach 3<sup>rd</sup> Year (post-clerkship) DGSOM students to become excellent diagnosticians and clinicians. Please contact Tahlia (or contact the [newsletter editor](#) and I will connect you) if you are interested in molding the skills and professional identities of your future colleagues.

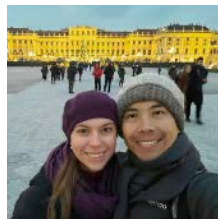
**UCLA David Geffen School of Medicine**



# Way to Go!



**Anthony Fredericks (2023)** matched into the Hospice and Palliative Care Fellowship at University of New Mexico.



**Agatha Brzenzski (2023)** matched into the Global Health Fellowship at University of Washington. She will spend the first year working in Anchorage, Alaska.



**Nate Coggins (2023)** matched into the Hospice & Palliative Care Fellowship at University of Utah.



**Niko Pascua (2023)** matched into the Undersea and Hyperbaric Medicine Fellowship at UCSD.



**Dong Yao (2023)** matched into the Informatics Fellowship at Stanford.



**Ethan Forsgren (2023)** matched into the newly created Fellowship that he is developing in Health Policy at Hennepin... where he will further his research skill development and prehospital care expertise. He already has a project lined up and planned grant to implement and study community paramedicine.



**Kenneth Kim (2025)** was elected to the EMRA Board of Directors for the next two years as the new EMRA Director of Health Policy at ACEP.

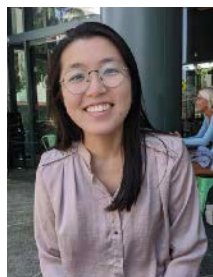


*Director of Health Policy*  
**Kenneth Kim, MD**  
UCLA Ronald Reagan  
Olive View Emergency | Los Angeles, CA

**CONTACT KENNETH**

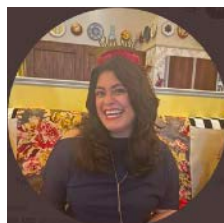


**Anna Yap (2022) and Kenneth Kim (2025)** were both guests on an EMRA\*Cast podcast on resident unionization. Take a [listen!](#)



**Ariel Wu (2025)** was elected to the California Medical Association Resident and Fellows Section (CMA-

RFS) District 4 Delegate, CMA Council member of the Council on Legislation and Council on Medical Services.



**Rose Diaz and Daniela Alarcon (2025)** has been volunteering at [Homeboy Industries](#) to assist with tattoo removal.

*"No entity on the planet removes more tattoos than Homeboy Industries. Tattoo removal is a free service provided to participants in the Homeboy Industries' program (trainees), members of the Los Angeles community, and minors who have gang-related or visible tattoos located on the hands, neck, or face. This has proven to be one of the most popular and most critical services for former gang members. Primarily because visible tattoos can be a major obstacle making it difficult for many to secure employment."*





# Kudos UCLA EM and Alumni



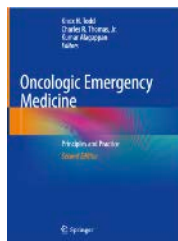
**Parveen Parmar (2008)**, co-leader of the USC Gender Equity in Medicine & Science (GEMS), received the 2022 AAMC Group on Women in Medicine and Science Leadership Award for an Organization (Emerging). The Group on Women in Medicine and Science Leadership Awards recognize outstanding individual and organizational contributions to advancing women leaders in academic medicine and science. Since the first award in 1995, these prestigious awards have recognized over 30 individuals and organizations.

In separate news Parveen received a Research for Health in Humanitarian Crises grant to do work in western Myanmar on managing cardiovascular disease among those affected by conflict in Karen State in collaboration with [Community Partners International](#).



**Knox Todd (1992)** has spent the last 6 years living in Argentina and recently gained citizenship there. He continues academic work in his area of interest following his departure from MD

Andersen, and is the Editor-in-Chief for the journal [Emergency Cancer Care](#). He is also the [Editor of the textbook Oncologic Emergency Medicine: Principles and Practice, 2nd Edition](#). Chapter 71 includes a posthumous contribution from Marshall Morgan.



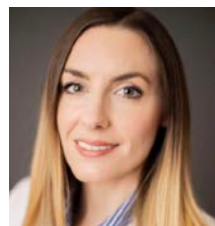
Knox has been making wine, the brand is Obra de Otros" (Work of Others).



**Carmen Wolfe (2015)** is actively recruiting her first class of interns as program director of her new EM residency program in Tennessee. The Tristar Emergency Medicine program and faculty have also been hosting medical student rotations.

## Medical Interest:

**TEACHING!**  
Dr. Wolfe serves as the Director of Experiential Learning for all of Tristar Nashville GME.



**Jada Roe (2015)** is now Assistant Medical Director at a level 2 community ED. She also works part time at the level 1 academic center and part time at a free standing ER. At the community ED they welcome 3rd year med students and she is the clerkship director for that too. Oh, and she is also the Ultrasound Director for the division. (None of us who know her are surprised at how much she does or how exceptional she is at all that she does.)

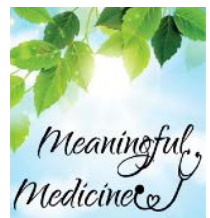


Congratulations again to **Craig Goolsby (2008)** who officially started as Chief at Harbor UCLA-EM September 2022.

He also recently graduated from the Tuck School of Business at Dartmouth College with a Master of Health Care Delivery Science.



**Theresa Cheng (2021)** was featured on a Meaningful Medicine podcast episode (out on both [Spotify](#) and [Apple podcasts](#)) on Infertility in Medicine.



Theresa was recently elected to be on the Board of the [Andrew Levitt Center](#) for Social Emergency Medicine.

The Andrew Levitt Center for Social Emergency Medicine leads the transformation of emergency care to elevate the importance of home, community and society. Theresa is currently completing her Skadden Fellowship at Bay Area Legal Aid where she has started Alameda County's first and only medical-legal partnership for unhoused survivors of intimate partner violence.



# BRAVO!

## A Message from the President

**Valerie Norton (1995)** started her Cal ACEP presidency in September, and she wants to highlight for all of us a number of new resources available on the [Cal ACEP website](#) just in the past 2 months:

- A toolkit to help members thrive in the era of the new CPT codes coming in January, including examples of how to set up your H&P templates so you get credit for what you've done.
- A toolkit for medical students and residents on how to save money during training and early in your career.
- Resources on caring for children with respiratory illness during the current surge, from our PEM colleagues.
- A video of a webinar on ED-embedded Palliative Care, that aired on Dec. 14 and is available on the website—all about how having Palliative Care embedded in the ED improves patient care and saves hospitals millions of dollars.

Val would also like to encourage all alumni to come to Cal ACEP's annual Legislative Leadership Conference in Sacramento on April 18, 2023, where they will lobby lawmakers in person on legislation that impacts emergency physicians. LLC is not only fun and educational, but there are great opportunities to socialize and network at the reception afterward.

Any suggestions are welcome about advocacy Cal ACEP should consider. Cal ACEP is partnering with national ACEP on advocacy around the Medicare cuts, the outrageous implementation of the No Surprises Act and its dysfunctional IDR process, Anthem non-payment of level 5 charts, and many other issues.

**Joseph Chan (2015)** is Medical Director of Beverly Hospital ED in Montebello which was honored to be named the 2022 Practice of the Year by Vituity. Their ED group was selected from over 180 individual practice locations across the United States for their tremendous progress in operations and continual improvement in patient care that the department has consistently achieved over the past five years under Joe's leadership.



Congratulations to **Ilene Claudius (2002)** who was awarded Outstanding Speaker at ACEP 2022 Scientific Assembly in San Francisco.



Congratulations to **Priscilla Hanudel (2012)** for being recognized by the California State Assembly as one of the Hispanic Heritage Month Community Leaders.



Congratulations to **Zach Gray (2004)** the new Chief Medical Officer at Torrance Memorial Hospital.



Congratulations to **Tabitha Cheng (2018)**, finishing her pediatric EM fellowship and with her prior EMS fellowship she has combined both at a faculty position at Harbor UCLA.



Congratulations to **Wendy Lin (2002)** who was recognized for 20 years of service at Cedars-Sinai Medical Center.





# More UCLA & Alumni News



Updates from our partner site: Antelope Valley Hospital has been rebranded as Antelope Valley Medical Center.

Congratulations to **Nicole Wojtal** who has become one of the new partners, the first female partner of Antelope Valley Emergency Medicine Associates (AVEMA). Nicole was born in Lombard, Illinois and completed her undergraduate studies at UC Berkeley (UCB) and then medical school with the joint UCB-UCSF medical program and completed her emergency medicine residency at UCSF Fresno. She completed the UCLA/AVH administration fellowship and has been working with us and at AV since. Since joining us as a fellow her family has doubled with the birth of her son Neve and then subsequently her daughter Romi. She is the Clinical Champion for the ED Bridge to Treatment grant at Antelope Valley.

The grant employs a full time substance use navigators that facilitate MAT and other assistance to the patient. She is also a Clinical Implementation Leader for the CA Bridge Program. In this role I help support hospitals getting their MAT programs up and running through outreach, coaching, presentations and charismatic nagging. *Fun fact about Nicole: She added UCLA as a "Place" on Google Maps and it has 110,000,000 views.*



Congratulations to Erik Akopian for also becoming partner with AVEMA. Erik completed his residency at LAC+USC in 2018 and has since held positions in both community emergency medicine and academic medicine. He currently works at Antelope Valley Medical Center, where he has the opportunity to serve the community and teach residents on shift. As part of a group of ER physicians, Erik played a crucial role in introducing Emergency Ultrasound to Papua New Guinea. He has also served as a clinical professor at both USC and Arrowhead Regional Medical Center, where he received the Clinical Teacher of the Year award in 2020. Currently, Erik is focused on understanding the nationwide crisis of emergency department crowding and developing systems to address the issue. In his personal time, Erik engages in activities such as meditation and surfing to maintain a clear and uncluttered mind.

**Mike Gertz** starts his Cal-ACEP President-elect term in 2023. He will be the 2nd Cal-ACEP President from AVEMA which is pretty rare from a single democratic group.

Antelope Valley Medical Center was recently recognized as being the 9th busiest ED in the entire USA. Their volume has been coming back-- they recently saw 520 patients in a 24hr period!

AVEMA continues to have an excellent track record of scribes going onto medical school. Long term UCLA and AVEMA scribe, **Pravin Krishna**, started medical school this past fall!



AVEMA partner **Malkeet Gupta (2006)** and AVEMA scribes have been partners in a number of the UCLA research projects, including NEXUS.



Thanks to the Los Angeles professional sports supporting healthcare workers and UCLA Health many took advantage of going to a Dodger's games and LA Kings games.

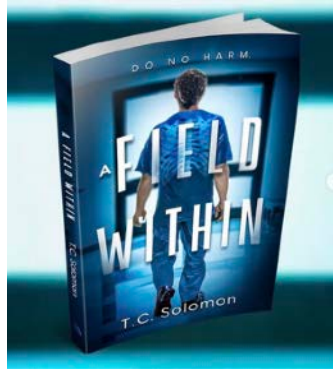


**Alumni - Do you have something to share with the UCLA residency and alumni family? Email [Richelle Cooper \(1998\)](#).**

# Looking for something to read?

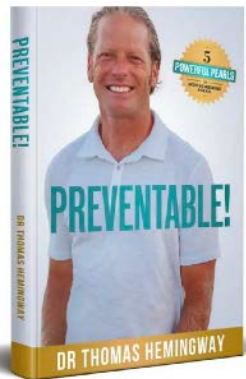
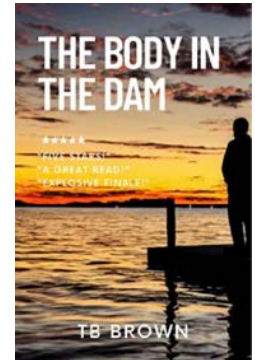


**Tom Solomon (2014)** published his debut novel "A Field Within" [available on amazon](#). He has also launched a website [tcsolomon.com](http://tcsolomon.com) if you want to connect with him.



**Todd Brown (2003)** picked up some new hobbies during covid. He learned to fiddle. He also wrote a novel, "[The Body in the Dam](#)". If you like a murder mystery/thriller, like a light

cozy weekend read, that is what this is. Please give it a review and spread the word. It is available wherever ebooks are sold, including Amazon.



**Thomas Hemingway (2006)** has a new book "PREVENTABLE! 5 Powerful Practices to Avoid Disease and Build Unshakeable Health" coming out January 15th, and already [available for pre-order](#). Be sure to also follow his top-rated regular [podcast Unshakeable Health](#).

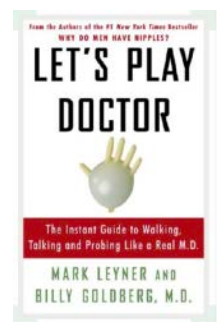
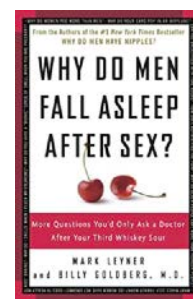
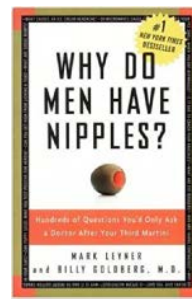
## coming soon THE PREVENTABLE BOOK

5 POWERFUL PRINCIPLES TO AVOID DISEASE AND BUILD UNSHAKEABLE HEALTH

What if illness, disease, fatigue, anxiety, stress, weight gain, was all preventable? What if you could have the tools you need to build unshakeable health? What if you had access to the education and lessons you need to take control of your health today? In this book, Dr. Thomas Hemingway, a board certified physician, award winning podcast host, and public speaker brings you more than 2 decades in practice merged with years of studies and research to help extend the length and quality of your life in five easy principles. This is a book for anyone and everyone, from high performance athletes, to the tired mother who wants to increase her energy and strength, to those looking for healing from disease. Preventable provides answers that can elevate your life.



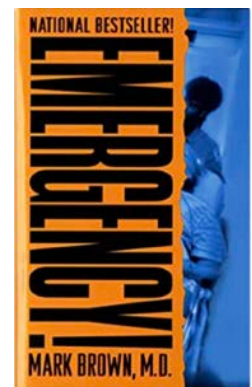
There are also some oldies but goodies if you did not know about other former alumni authors, you might check out **Billy Goldberg's (1996)** books - the first published in 2005 a #1 New York Times Bestseller, "[Why do Men Have Nipples? Hundreds of Questions You'd Only Ask a Doctor After Your Third Martini.](#)" The second book also hit the #1 New York Times Bestseller list, 2006, "[Why Do Men Fall Asleep After Sex? More Questions You'd](#)



[Only Ask a Doctor After Your Third Whiskey Sour.](#)" and the third book in 2009 "[Let's Play Doctor: The Instant Guide to Walking, Talking and Probing Like a Doctor.](#)" You can tune in on SiriusXM DoctorRadio with the [Ask Dr. Billy.](#)



Another national best seller, Antelope Valley Emergency Medicine Associate founding partner **Mark Brown's (1988)** book, "[Emergency!: True Stories from the Nation's ERs.](#)"





# Caught on Shift

**Alex Daguanno (2022) and Lizzie Ferreira (2022)** starting together at PIH.



**Anna Nguyen (2022)** starting at O'Connor Hospital in Northern California... the same hospital where she was born.



Welcome to the View!



Thanks to ultrasound fellow **Erica Kiemele-Giss** for celebrating interns' Aubrey Kelley (2026) and Alex Duong (2026) champagne taps and some great ultrasound teaching.

Ok not caught on shift, but caught in her new backyard. **Chelsea Robinson (2022)** has been enjoying rural medicine allowing her to connect with her patients and live in a wonderful community with the Sierra mountains in the backyard.



August 2022 and this amazing crew cleared the waiting room at OV. Way to go **AJ (2024), Amanda Amen (2024), Zainab Ahmed (2024), and Melissa Baker (2026)**.



**Joe Chan (2015) and Mike Casner (2017)** caught at the annual Vituity



Conference. Joe is Medical Director at Beverly Hospital in Montebello and Mike is at Mount Sinai and Holy Cross hospitals in Chicago where he is also the Director for Quality Improvement.



**Eric Snyder (2008)** in control at Tarzana.



**Claudie Bolduc (2021) and Cate Yaggi (2020)** working together in Austin at Texas A&M Baylor, Scott & White Health System.



Not to be out done **Alan Chiem, Anthony Fredericks (2023), Nate Coggins (2023), Chris Briones (2025) and Alex Duong (2026)** also cleared the OV waiting room. Maybe they could send some help to us at Reagan to clear the UCLA waiting room?



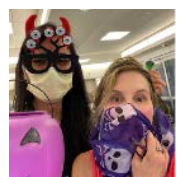
Not exactly caught on shift, but Alumni group sighting at the annual Verdugo Hills Hospital ED summer party - Verdugo Hills CMO



**Armand Dorian (2003), Verdugo Hills Emergency Department Medical Director David Tashman (1999), USC-KECK CMIO Gil Shlamovitz (2007)** with husband Tomer and kids Maya and Ben our space medicine fellow **Haig Aintablian (2022)**.



Thanks to **Carolyn Sachs (1994)** for being our Wellness Officer. GRATEFUL for you. Happy Teddy Bear Day September 9. And, since Carolyn looks out for everyone else's wellness she works many of the holidays and outfits the crew, brings treats and toys for kids.

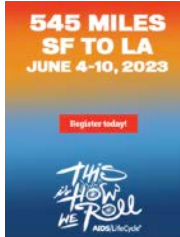




# Alumni & Charities - Consider Donating



**AIDS/LifeCycle®** JUNE 4-10, 2023



**Michael Casner** CYCLIST  
Team Captain Team Boo Boo AIDS/LifeCycle 2023  
\$1,860 RAISED

**Mike Casner (2017)** is again planning to participate in and raise money for education, healthcare and research on HIV. He is working towards the goal of \$30K and working with a great team of friends. You can follow him on his planning journey on instagram (@the.other.doctor.mike), learn more about [AIDS Lifecycle](#) and the 545 mile bicycle ride from San Francisco to Los Angeles in June 2023 and you can link to [Mike's donation page](#) in support of Mike who is team captain for team Boo Boo (team fundraising goal of 100K).



**Raven Harris, daughter of Lynne McCullough (1998)** is a student visionaries of the year candidate for the leukemia and lymphoma society. She is raising money to help fund blood cancer research and treatments and would very much appreciate your support in the campaign. [Donations](#) won't be accepted until the campaign begins January 19.

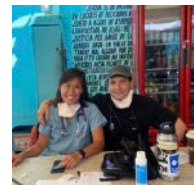


**Carlo Reyes (2003)** foundation Health-e-Charity is partnering with the Manny Pacquiao Foundation to send a medical mission to the Philippines in February 2023. Medical and non-medical volunteers needed for the Philippines Medical Mission, February 2023. Email [Payton@health-e-charity.org](mailto:Payton@health-e-charity.org) if you would like to volunteer.



**Refugee Health Alliance (RHA)** was founded by **Hannah Janeway** and colleagues, and **Matt Waxman (2007)** is a member of the board and regularly travels to serve patient needs. They provide including general medical and pediatric care, LGBTQIA+ care, prenatal and midwifery, women's care, acupuncture and naturopathic medicine, medical-legal services, services addressing social determinants of health, and dentistry.

RHA continues to be the largest non-governmental provider of showers, medical, mental health, and midwife services for migrants and refugees in Tijuana, Mexico. Title 42 - the remain in Mexico policy blocking asylum seekers from entering the United States - has left large numbers of Central Americans, Haitians, Africans and Ukrainians stranded in Tijuana. A number of residents and attendings have recently worked with RHA including **Judy Choe, Matt Waxman, Cooper Akhus (2024), Cristina Villalpondo (2025), Cristian Hernandez (2025) and Agatha Brzezinski (2023)** amongst others. Saturday outreach where RHA visits local shelters and the weekday stand clinic at Resistencia De Salud in Tijuana are ways to get involved. Please email Matt Waxman if interested.



The **Oliver View Trauma Recovery Center** (see page 4) accepts [donations](#). Gently used clothing for adults and children, hygiene products and pantry items can be donated at the North Annex on the Olive View campus (14445 Olive View Dr, North Annex, Sylmar, California 91342).



**Community Partners International (CPI)** empowers vulnerable communities in Asia to meet their essential health, humanitarian and development needs. Founded by U.S. doctors (**Tom Lee**) and philanthropists in 1998, the organization has grown to serve more than one million people each year. The organization focuses on communities affected by conflict, violence, and displacement, in remote and hard-to-reach contexts, and marginalized through poverty and exclusion.





# More Alumni Kudos & News



Congratulations to **Josh Troke (2015)** who has had continued success as a

television screenwriter. He has a new script commitment that was picked up with penalty (which for us not in the know means the network or studio buys the pitch and guarantees to pay for at least a produced pilot or script, or else pay the writer an extra sum (penalty) if they decide not to go forward with the project.)

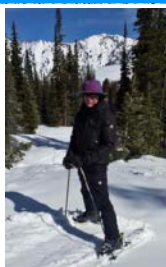
Sci-Fi Medical Drama From Joshua Troke, Mickey Fisher & Justin Lin Set At NBC With Penalty

By Caroline Patski  
December 15, 2022 2:27pm



Joshua Troke  
Peter Muller

**EXCLUSIVE:** NBC has given a script commitment with penalty to an untitled sci-fi medical drama from Joshua Troke (*Good Sam*), *Extant* and *Rescue* creator Mickey Fisher, Justin Lin's *Perfect Storm* Entertainment and Universal Television, where Lin is under a deal.



**Stuart Goldfarb** wrote the liner notes for the recent Micky Dolenz (aka of the Monkeys fame) album. Stuart still loves

winter, the snow and skiing in Utah.



**Check out these future UCLA EM clinicians sporting their UCLA onesie. Thanks to Jen Cassidy and Matthew Hill for the UCLA residency swag.**



Samuel (dad Josh Baugh (2019))



Rayun - (dad Wyatt Hong (2024))



Zoe (mom Carolyn Gates (2014))



Aspen (mom Emily Huang (2013))



**Annum Bhullar (2020) and Luiz Souza-Filho (2020)** decided to no longer wait on pursuing their dream of travelling around the world. They started to take full advantage of the EM flexibility, stacking their ER shifts to half the month and spending the rest of our time living in different countries around the world! Since Summer 2021, they have: honeymooned in Portugal, summited a volcano in Guatemala, snorkeled in Hawaii, went glamping across Colombia, visited family in Brazil, hiked the Annapurna Circuit in Nepal, ate at hawker stations in Singapore, roadtripped the western coast of Norway, lived through the summer heat wave in Hungary, rode camels in the desert in Morocco, backpacked the Salkantay Trek in Peru,

learned to cook in Thailand, and visited family in Pakistan. After flying into California to work 10 shifts in a 14-15 day period they realized they weren't really *living* in California anymore. So, they jobs on the Washington coast at a critical-access hospital. At Willapa Harbor Hospital they can work 24-hour shifts which allows them to continue this fun travel-lifestyle for a little longer. For 2023 they are planning on camper-vanning New Zealand's South Island, safaris in South Africa, hiking the Tour du Mont Blanc, exploring autumn red forests in Japan, and village-hopping in Vietnam. *"It's been an extremely rewarding experience becoming a physician for a small town. Patients can be surprisingly sick, there are challenges to not having immediate access to specialists, and everyone knows everyone... But having time to sit down with each patient, to discuss options and plans, to get to know one another (beyond a super rushed two-minute speedy interview to take care of your other 10 sick patients) has made us kinda fall in love with the practice of medicine again. I think our story just goes to show one of the best parts of Emergency Medicine: You can be a full-time ED physician and design your life in a way to still travel the whole world, or whatever else you want. We are having the absolute best time of our lives."*





# Way to Go UCLA EM & Alumni



**Armand Dorian (2003)** and family was featured in the local magazine.



**Collette Wiseman (2012)** launched a business extending the work she started with her website [mamasmilkworks](http://mamasmilkworks.com) as a lactation consultant.



Congratulations to **Cameron Harrison (2021)** for being selected as chief for his critical care research fellows group at Stanford.



Congratulations to **Haig Aintablian (2022)** for being awarded the Young Professional of the Year from the Armenian Professional Society.



**Eric Snyder (2008)** who has his pilots license has been adding to his flying acumen and safety by working towards certification for IFR (Instruments flying rules) so he can fly safely in inclement weather. This additional training is a long process, but he has passed his first exam.



**Pam Dyne (1995)** singing with her brother's group Hacienda Garage Band at Sagebrush Cantina in Calabasas as part of a fundraiser for a youth baseball team to go to a tournament in Cooperstown.

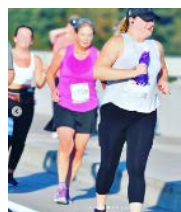


**Gil Shlamovitz (2007)**  
"Is there a doctor on the airplane?"

**Aws Al-Abdullah (2020)** was recognized with a certification of appreciation from his practice group for the most intubations in 2022. Way to go black cloud!



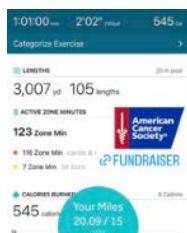
**Christian Hernandez (2025)** ran his first half marathon... two serious days of training and a ~7.45/mile pace. WOW! Classmate **Kevin Mauerman (2025)** cheered him on.



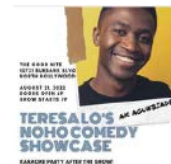
**Jen Cassidy** ran a half marathon in Portland Oregon. Way to go!



**Alan Chiem** completed the American Cancer Society swim challenge.



**Kareem Agunbiade** continues to book many comedy clubs when he is not attending and teaching our residents and students ultrasound.







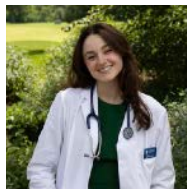
**Beza Mengitzu**  
- UCLA



**Wes Armstrong**  
- UCLA



**Timothy Kim**  
- Albert Einstein



**Madison Kipp**  
- Loyola



**Grace Yang**  
- Tulane



**Esin Bulut**  
- Florida Atlantic

# White Coat Ceremonies & Match

One of the many bonuses and luxuries of working at RR UCLA MC and our residency program is the ability to collaborate and mentor undergraduate and post-baccalaureate pre health students. We have the long established Emergency Medicine Research Associate (EMRA) volunteer program who are essential to our research endeavors.

We want to celebrate them as the former department colleagues embark on their medical school careers this year and had their white coat ceremonies this summer.

Hopefully some of them will choose emergency medicine as a specialty, or at least return to UCLA for residency training in the future. Congratulations to all of these amazing individuals!

Myles Chang - USC Keck, Akhil Paladugu - USC Keck, Grace Yang - Tulane, Rishabh Shah - USC Keck, Cliff Danza - UC Irvine, Madison Kipp - Loyola University Chicago, Jane Burgan - Stony Brook, Timothy Kim - Albert Einstein, Davis (Junghyuk) Park - Virginia Commonwealth University, Soheib Ezubeik - The Ohio State School of Medicine, Wes Armstrong UCLA DGSOM-MSTP, Jacob Hershenhouse - USC Keck

We also had our former central information manager (CIM-scribe) who started medical school this year: Beza Mengitzu at UCLA DGSOM-PRIME-LA/CDU-MEP, Esin Bulut - Florida Atlantic University Charles E. Schmidt College of Medicine, Tiffany Cao - UCSF, Pravin Krishna - St. George's University School of Medicine.

Also shout out to former CIMs who graduated medical school this year and started residency including: Roxanna Tabrizi - Internal Medicine resident at UCLA, Emily Xu - General Surgery resident at Baylor University, and Karen Bryan - Internal Medicine at University of Michigan.



**Cliff Danza**  
- UCI



**Soheib Ezubeik**  
- The Ohio State



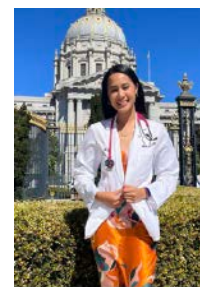
**Jane Burgan**  
- Stony Brook



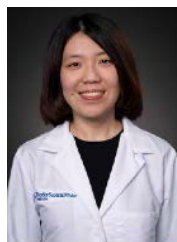
**Jacob Hershenhouse**  
- USC



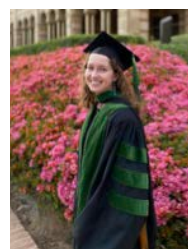
**Davis Park**  
- VCU



**Tiffany Cao**  
- UCSF



**Emily Xu**  
- Surgery  
Residency at  
Baylor



**Karen Bryan**  
- Internal  
Medicine  
Residency at  
University of  
Michigan



**Roxy Tabrizi**  
- Internal Medicine  
Residency at  
UCLA



**Akhil Paladugu, Myles  
Chang, Rishabh Shah**  
- USC

**Schriger DL.** The Evolution of the Methodologic Quality of Research Papers in Annals. *Ann Emerg Med.* 2022 Nov;80(5):389-391. doi: 10.1016/j.annemergmed.2022.09.010. PMID: 36265915.

Du KJ, Li GS, Zhang K, Lin Y, Yang F, **Schriger DL.** Prof. David L. Schriger: Guidelines for Presenting Tables and Figures in Scientific Manuscripts. *Ann Transl Med.* 2022 Sep;10(17):945. doi: 10.21037/atm-2022-27.

Jones CW, Adams A, Misemer BS, Weaver MA, Schroter S, Khan H, Margolis B, **Schriger DL,** Platts-Mills TF. Peer Reviewed Evaluation of Registered End-Points of Randomised Trials (the PRE-REPORT study): a stepped wedge, cluster-randomised trial. *BMJ Open.* 2022 Sep 28;12(9):e066624. doi: 10.1136/bmjopen-2022-066624.

**Ioannides KLH, Dekker AM,** Shin ME, **Schriger DL.** Ambulances Required to Relieve Overcapacity Hospitals: A Novel Measure of Hospital Strain During the COVID-19 Pandemic in the United States. *Ann Emerg Med.* 2022 Oct;80(4):301-313.e3. doi: 10.1016/j.annemergmed.2022.05.036. Epub 2022 Aug 6.

**Akie TE, Gupta M, Rodriguez RM, Hendey GW,** Wilson JL, Quinones AK, **Mower WR.** Physical Examination Sensitivity for Skull Fracture in Pediatric Patients with Blunt Head Trauma: A Secondary Analysis of the National Emergency X-Radiography Utilization Study II Head Computed Tomography Validation Study. *Ann Emerg Med.* 2022 Oct 31:S0196-0644(22)01031-9. doi: 10.1016/j.annemergmed.2022.08.442. Epub ahead of print.

Mohr NM, Santos Leon E, Carlson JN, Driver B, **Krishnadasan A,** Harland KK, Ten Eyck P, **Mower WR,** Foley TM, Wallace K, McDonald LC, Kutty PK, Santibanez S, **Talan DA; Project COVERED Emergency Department Network.** Endotracheal Intubation Strategy, Success, and Adverse Events Among Emergency Department Patients During the COVID-19 Pandemic. *Ann Emerg Med.* 2022 Nov 3:S0196-0644(22)01117-9. doi: 10.1016/j.annemergmed.2022.09.013. Epub ahead of print.

Raja AS, **Rodriguez RM, Gupta M, Isaacs ED,** Kornblith LZ, Prabhakar A, Saillant N, Schmit PJ, Wei SH, **Mower WR.** Developing a decision instrument to guide abdominal-pelvic imaging of blunt trauma patients: Methodology and protocol of the NEXUS abdominal-pelvic imaging study. *PLoS One.* 2022 Jul 25;17(7):e0271070. doi: 10.1371/journal.pone.0271070.

Mohr NM, **Krishnadasan A,** Harland KK, Ten Eyck P, **Mower WR,** Schradling WA, Montoy JCC, McDonald LC, Kutty PK, Hesse E, Santibanez S, Weissman DN, Slev P, **Talan DA; Project COVERED Emergency Department Network.** Emergency department personnel patient care-related COVID-19 risk. *PLoS One.* 2022 Jul 22;17(7):e0271597. doi: 10.1371/journal.pone.0271597.

Oh DM, Shkirkova K, Poblete RA, Chung PW, Saver JL, **Starkman S,** Liebeskind DS, Hamilton S, Wilson M, Sanossian N. Association Between Hyperacute Blood Pressure Variability and Hematoma Expansion After Intracerebral Hemorrhage: Secondary Analysis of the FAST-MAG Database. *Neurocrit Care.* 2022 Dec 5. doi: 10.1007/s12028-022-01657-2. Epub ahead of print.

Matossian V, **Starkman S,** Sanossian N, Stratton S, Eckstein M, Conwit R, Liebeskind DS, Sharma L, Tenser MK, Saver JL. Quantifying the amount of greater brain ischemia protection time with pre-hospital vs. in-hospital neuroprotective agent start. *Front Neurol.* 2022 Sep 13;13:990339. doi: 10.3389/fneur.2022.990339.

Polson JS, Zhang H, Nael K, Salamon N, Yoo BY, El-Saden S, **Starkman S,** Kim N, Kang DW, Speier WF 4th, Arnold CW. Identifying acute ischemic stroke patients within the thrombolytic treatment window using deep learning. *J Neuroimaging.* 2022 Nov;32(6):1153-1160. doi: 10.1111/jon.13043. Epub 2022 Sep 6.

Tokunboh I, Sung EM, Chatfield F, Gaines N, Nour M, **Starkman S,** Saver JL. Improving Visualization Methods of Utility-Weighted Disability Outcomes for Stroke Trials. *Front Neurol.* 2022 May 13;13:875350. doi: 10.3389/fneur.2022.875350.

Randhawa AS, Pariona-Vargas F, **Starkman S,** Sanossian N, Liebeskind DS, Avila G, Stratton S, Gornbein J, Sharma L, Restrepo-Jimenez L, Valdes-Sueiras M, Kim- Tenser M, Villablanca P, Conwit R, Hamilton S, Saver JL. Beyond the Golden Hour: Treating Acute Stroke in the Platinum 30 Minutes. *Stroke.* 2022 Aug;53(8):2426-2434. doi: 10.1161/STROKEAHA.121.036993. Epub 2022 May 12.



Mathews M, Parast L, Elliott MN, Lehrman WG, Stark D, **Waxman DA**. Associations between Emergency Severity Index and patient experience of care in the emergency department. Acad Emerg Med. 2022 Oct 5. doi: 10.1111/acem.14604. Epub ahead of print. P

Tolpadi A, Elliott MN, **Waxman D**, Becker K, Flow-Delwiche E, Lehrman WG, Stark D, Parast L. National travel distances for emergency care. BMC Health Serv Res. 2022 Mar 24;22(1):388. doi: 10.1186/s12913-022-07743-7.

Golden A, Diller D, Riddell J, **Jordan J**, Gisondi M, Ahn J. A workforce study of emergency medicine medical education fellowship directors: Describing roles, responsibilities, support, and priorities. AEM Educ Train. 2022 Sep 17;6(5):e10799. doi: 10.1002/aet2.10799.

**Jordan J**, Gisondi M, Buchanavage J, Diller D, Pedigo R, Anh J, Riddell J. Is it worth it? A qualitative analysis of the impact of medical education fellowships on careers. AEM Educ Train 2022: e10819.

Furbacher J, Fockele C, Buono BD, Janneck L, March C, Molina M, Duber HC, Doran KM, Lin MP, **Cooper RJ**, Modi P. 2021 SAEM Consensus Conference Proceedings: Research Priorities for Developing Emergency Department Screening Tools for Social Risks and Needs. West J Emerg Med. 2022 Oct 10;23(6):817-822. doi: 10.5811/westjem.2022.8.57271.

Samuels-Kalow ME, Agrawal P, Rodriguez G, Zeidan A, Love JS, Monette D, Lin M, **Cooper RJ**, Madsen TE, Dobiesz V. Post-Roe emergency medicine: Policy, clinical, training, and individual implications for emergency clinicians. Acad Emerg Med. 2022 Oct 21. doi: 10.1111/acem.14609. Epub ahead of print.

Do DH, Bernardes-Souza B, **Merjanian M**, **Lombardo B**, Donaldson DM, **McCullough LB**, Boyle NG, **Cooper RJ**. Development of a Care Pathway for Atrial Fibrillation Patients in the Emergency Department. Crit Pathw Cardiol. 2022 Sep 1;21(3):105-113. doi: 10.1097/HPC.0000000000000289. Epub 2022 Apr 25.

Writing Group for the **CODA Collaborative**. A Video-Based Consent Tool: Development and Effect of Risk-Benefit Framing on Intention to Randomize. J Surg Res. 2022 Nov 22;283:357-367. doi: 10.1016/j.jss.2022.10.089. Epub ahead of print.

Minneci PC, **Talan DA**, Deans KJ. Result Interpretation in Nonoperative Management of Uncomplicated Appendicitis. Pediatrics. 2022 Nov 1;150(5):e2022059372. doi: 10.1542/peds.2022-059372A.

Writing Group for the **CODA Collaborative**, Zhang IY, Voldal EC, Davidson GH, Liao JM, Thompson CM, Self WH, Kao LS, Cherry-Bukowiec J, Raghavendran K, Kaji AH, DeUgarte DA, Gonzalez E, Mandell KA, Ohe K, Siparsky N, Price TP, Evans DC, Victory J, Chiang W, Jones A, Kutcher ME, Ciomperlik H, Liang MK, Evans HL, Faine BA, Neufeld M, Sanchez SE, **Krishnadasan A**, Comstock BA, Heagerty PJ, Lawrence SO, Monsell SE, Fannon EEC, Kessler LG, **Talan DA**, Flum DR. Association of Patient Belief About Success of Antibiotics for Appendicitis and Outcomes: A Secondary Analysis of the CODA Randomized Clinical Trial. JAMA Surg. 2022 Oct 5:e224765. doi: 10.1001/jamasurg.2022.4765. Epub ahead of print.

Simmering JE, Polgreen LA, **Talan DA**, Cavanaugh JE, Polgreen PM. Association of Appendicitis Incidence With Warmer Weather Independent of Season. JAMA Netw Open. 2022 Oct 3;5(10):e2234269. doi: 10.1001/jamanetworkopen.2022.34269.

Thompson CM, ...**Krishnadasan A**, **Talan DA**, Fannon E, Kessler LG, Comstock BA, Heagerty PJ, Monsell SE, Lawrence SO, Flum DR, Lavallee DC; Writing Group for the **CODA Collaborative**:. Perception of Treatment Success and Impact on Function with Antibiotics or Appendectomy for Appendicitis: A Randomized Clinical Trial with an Observational Cohort. Ann Surg. 2022 Jul 11. doi: 10.1097/SLA.0000000000005458. Epub ahead of print.

Writing Group for the **CODA Collaborative**, **Talan DA**, **Moran GJ**, **Krishnadasan A**, .... Analysis of Outcomes Associated With Outpatient Management of Nonoperatively Treated Patients With Appendicitis. JAMA Netw Open. 2022 Jul 1;5(7):e2220039. doi: 10.1001/jamanetworkopen.2022.20039.

Paine BA, Rech MA, Vakkalanka P, Gross A, Brown C, Harding SJ, Slocum G, Zimmerman D, Zepeski A, Rewitzer S, Howington GT, Campbell M, Dawson J, Treu CN, Nelson L, Jones M, Flack T, Porter B, Sarangarm P, Mattson AE, Bailey A, Kelly G, **Talan DA**. High prevalence of fluoroquinolone-resistant UTI among US emergency department patients diagnosed with urinary tract infection, 2018-2020. *Acad Emerg Med*. 2022 Sep;29(9):1096-1105. doi: 10.1111/acem.14545.

Mohr NM, Vickery KD, League K, Boyer AP, **Talan DA**. Assessing COVID-19 risk among people experiencing homelessness-Correspondence. *Am J Emerg Med*. 2022 Sep;59:198-199. doi: 10.1016/j.ajem.2022.05.023. Epub 2022 May 19.

Writing Group for the **CODA Collaborative**, Davidson GH, Monsell SE, Evans H, Voldal EC, Fannon E, Lawrence SO, **Krishnadasan A, Talan DA**, Bizzell B, Heagerty PJ, Comstock BA, Lavalley DC, Villegas C, Winchell R, Thompson CM, Self WH, Kao LS, Dodwad SJ, Sabbatini AK, Drouillard D, Machado-Aranda D, Gibbons MM, Kaji AH, DeUgarte DA, Ferrigno L, Salzberg M, Mandell KA, Siparsky N, Price TP, Raman A, Corsa J, Wisler J, Ayoung-Chee P, Victory J, Jones A, Kutcher M, McGrane K, Holihaan J, Liang MK, Cuschieri J, Johnson J, Fischkoff K, Drake FT, Sanchez SE, Odom SR, Kessler LG, Flum DR. Self-selection vs Randomized Assignment of Treatment for Appendicitis. *JAMA Surg*. 2022 Jul 1;157(7):598-608. doi: 10.1001/jamasurg.2022.1554. Erratum in: *JAMA Surg*. 2022 Oct 1;157(10):971.

Mohr MN, **Krishnadasan A**, Harland KK, Eyck PT, **Mower W**, Schradling WA, Montoy JC, McDonald LC, Kutty PK, Hesse E, Santibanez S, Weissman DN, Slev P, **Talan DA** for the Project COVERED Emergency Department Network. Emergency department personnel patient care-related COVID-19 risk. *PLOS ONE*. 2022 Jul 22;17(7):e0271597.

Mohr NM, León ES, Carlson JN, Driver B, **Krishnadasan A**, Harland KK, Ten Eyck P, Mower W, Foley TM, Wallace K, McDonald C, Kutty PK, Santibanez S, **Talan DA** for the Project COVERED Emergency Department Network. Endotracheal intubation strategy, success, and adverse events among emergency department patients during the COVID-19 pandemic, May–December 2020: A U.S. prospective, multicenter study. *Ann Emerg Med*. 2022 Nov 3:S0196-0644(22)01117-9.

Minecci PC, **Talan DA**, Deans KJ. Result interpretation in nonoperative management of uncomplicated appendicitis (In response to Nonoperative management of uncomplicated appendicitis). *Pediatrics online*, July 13, 2022.

**Talan DA**, Salminen P. Management of acute uncomplicated appendicitis (in response to Nonoperative vs operative management of uncomplicated acute appendicitis- a systematic review and meta-analysis). *JAMA Surg*. 2022;157:828-34.

**Talan DA, Mohr N**. What's your risk of getting COVID-19 by providing emergency care. *ACEP NOW*. November 2022

**ACTIV-3/TICO Study Group, ... (PETAL network Lim G, Hendey GW)**. The Association of Baseline Plasma SARS-CoV-2 Nucleocapsid Antigen Level and Outcomes in Patients Hospitalized With COVID-19. *Ann Intern Med*. 2022 Oct;175(10):1401-1410. doi: 10.7326/M22-0924. Epub 2022 Aug 30.

**ACTIV-3/TICO Study Group, ... (PETAL network Lim G, Hendey GW)**. Efficacy and Safety of Ensovibep for Adults Hospitalized With COVID-19 : A Randomized Controlled Trial. *Ann Intern Med*. 2022 Sep;175(9):1266-1274. doi: 10.7326/M22-1503. Epub 2022 Aug 9.

**Darby A**, Cleveland Manchanda EC, **Janeway H**, Samra S, Hicks MN, Long R, Gipson KA, Chary AN, Adjei BA, Khanna K, Pierce A, Kaltiso SO, Spadafore S, Tsai J, **Dekker A**, Thiessen ME, Foster J, **Diaz R**, Mizuno M, Schoenfeld E. Race, racism, and antiracism in emergency medicine: A scoping review of the literature and research agenda for the future. *Acad Emerg Med*. 2022 Nov;29(11):1383-1398. doi: 10.1111/acem.14601.

Long R, Cleveland Manchanda EC, **Dekker AM**, Kraynov L, Willson S, Flores P, **Samuels EA**, Rhodes K. "Community engagement via restorative justice to build equity-oriented crisis standards of care". *J Natl Med Assoc*. 2022 Aug;114(4):377-389. doi: 10.1016/j.jnma.2022.02.010. Epub 2022 Mar 29.

**Levine M, Tashman D**, Recchio I, Friedman N, Seltzer J, Minns A, LoVecchio F. Neurotoxicity Associated With the Southern Pacific Rattlesnake (*Crotalus helleri*). *Ann Emerg Med*. 2022 Oct 14:S0196-0644(22)00593-5. doi: 10.1016/j.annemergmed.2022.08.020. Epub ahead of print



Love JS, Karshenas DL, Spyres MB, Farrugia LA, Kang AM, Nguyen H, Campleman SL, Li S, Wax PM, Brent J, Aldy K; **Toxicology Investigators Consortium Study Group**. The Toxicology Investigators Consortium Case Registry-the 2021 Annual Report. *J Med Toxicol*. 2022 Oct;18(4):267-296. doi: 10.1007/s13181-022-00910-6. Epub 2022 Sep 7.

**Levine M, Spungen H**, Pizon AF. Failure of Crotalidae Immune F(ab')<sub>2</sub> Equine Antivenom to Achieve Control in a Southern Pacific Rattlesnake Envenomation. *Ann Emerg Med*. 2022 Dec;80(6):525-527. doi: 10.1016/j.annemergmed.2022.06.013. Epub 2022 Aug 9.

Hudson DZ, Repetti GG, Hoesterey DT, Memin RL, Wang TS, **Levine M**. A 77-year old woman with capillary hypoxia and perioral cyanosis. *Chest* 2022;162:E295-9.

Im DD, Scott KW, Venkatesh AK, Lobon LF, Kroll DS, **Samuels EA**, Wilson MP, Zeller S, Zun LS, Clifford KC, Zachrison KS. A Quality Measurement Framework for Emergency Department Care of Psychiatric Emergencies. *Ann Emerg Med*. 2022 Nov 16:S0196-0644(22)01111-8. doi: 10.1016/j.annemergmed.2022.09.007.

Hallowell BD, Chambers LC, **Samuels EA**, Bratberg J, McDonald J, Nitenson A, Onyejekwe C, Beaudoin FL. Sociodemographic and prescribing characteristics that impact long-term retention in buprenorphine treatment for opioid use disorder among a statewide population. *Drug Alcohol Depend*. 2022 Oct 30;241:109680. doi: 10.1016/j.drugalcdep.2022.109680. Epub ahead of print.

Gallagher TH, Doran KM, **Samuels EA**, McCormack RP. The Perceived Impact of the COVID-19 Pandemic on the Social Needs of Adult Emergency Department Patients. *Health Equity*. 2022 Aug 22;6(1):610-615. doi: 10.1089/heq.2022.0015.

Wunsch C, Wightman R, Pratty C, Jacka B, Hallowell BD, Clark S, Davis CS, **Samuels EA**. Thirty-day Treatment Continuation After Audio-only Buprenorphine Telehealth Initiation. *J Addict Med*. 2022 Sep 14. doi: 10.1097/ADM.0000000000001077. Epub ahead of print.

Kelly TD, Hawk KF, **Samuels EA**, Strayer RJ, Hoppe JA. Improving Uptake of Emergency Department-initiated Buprenorphine: Barriers and Solutions. *West J Emerg Med*. 2022 Jul 11;23(4):461-467. doi: 10.5811/westjem.2022.2.52978.

Beaudoin FL, Jacka BP, Li Y, **Samuels EA**, Hallowell BD, Peachey AM, Newman RA, Daly MM, Langdon KJ, Marshall BDL. Effect of a Peer-Led Behavioral Intervention for Emergency Department Patients at High Risk of Fatal Opioid Overdose: A Randomized Clinical Trial. *JAMA Netw Open*. 2022 Aug 1;5(8):e2225582. doi: 10.1001/jamanetworkopen.2022.25582.

**Samuels EA**, Taylor RA, Pendyal A, Shojaee A, Mainardi AS, Lemire ER, Venkatesh AK, Bernstein SL, Haber AL. Mapping emergency department asthma visits to identify poor-quality housing in New Haven, CT, USA: a retrospective cohort study. *Lancet Public Health*. 2022 Aug;7(8):e694-e704. doi: 10.1016/S2468-2667(22)00143-8.

**Samuels EA**, Bailer DA, Yolken A. Overdose Prevention Centers: An Essential Strategy to Address the Overdose Crisis. *JAMA Netw Open*. 2022 Jul 1;5(7):e2222153. doi: 10.1001/jamanetworkopen.2022.22153.

Naeem AH, Davis CS, **Samuels EA**. The Importance of Federal Action Supporting Overdose-Prevention Centers. *N Engl J Med*. 2022 May 26;386(21):1965-1967. doi: 10.1056/NEJMp2119764. Epub 2022 May 21.

Martinez-Strengel A, **Samuels EA**, Cross J, Cramer LD, Desai MM, Gotian R, Gross CP, Latimore D, Cavazos JE, Boatright D. Trends in U.S. MD-PhD Program Matriculant Diversity by Sex and Race/Ethnicity. *Acad Med*. 2022 Sep 1;97(9):1346-1350. doi: 10.1097/ACM.0000000000004747. Epub 2022 May 17.

**Humphreys C, Crager S**. Emergency Department Management of Pulmonary Hypertension. *Emergency Medicine Clinics of North America* 2022;40(3)519-537.

## Alumni Publications

**Rodriguez RM**, Nichol G, Eucker SA, Chang AM, **O'Laughlin KN**, Pauley A, Rising KL, Eswaran V, Morse D, Li C, Patel A, Duber HC, Arreguin M, Shughart L, Glidden D; PROCOVAXED Study Network. Effect of COVID-19 Vaccine Messaging Platforms in Emergency Departments on Vaccine Acceptance and Uptake: A Cluster Randomized Clinical Trial. *JAMA Intern Med.* 2022 Dec 27. doi: 10.1001/jamainternmed.2022.5909. Epub ahead of print. PMID: 36574256.

**Cheng T**, Staats K, Kaji AH, D'Arcy N, Niknam K, Donofrio-Odmann JJ. Comparison of prehospital professional accuracy, speed, and interrater reliability of six pediatric triage algorithms. *J Am Coll Emerg Physicians Open.* 2022 Jan 14;3(1):e12613. doi: 10.1002/emp2.12613.

Tilley L, Schuler K, Cole R, Fahlsing C, Rudinsky S, Peters S, **Goolsby C**. Military Medical Provider Perspectives During the New York COVID-19 Response. *Mil Med.* 2022 Nov 12;usac338. doi: 10.1093/milmed/usac338. Epub ahead of print.

Wyckoff MH, ..., **Goolsby CA**, ...; Collaborators. 2022 International Consensus on Cardiopulmonary Resuscitation and Emergency Cardiovascular Care Science With Treatment Recommendations: Summary From the Basic Life Support; Advanced Life Support; Pediatric Life Support; Neonatal Life Support; Education, Implementation, and Teams; and First Aid Task Forces. *Resuscitation.* 2022 Oct 29:S0300-9572(22)00684-0. doi: 10.1016/j.resuscitation.2022.10.005. Epub ahead of print.

Wyckoff MH, **Goolsby CA**, .... 2022 International Consensus on Cardiopulmonary Resuscitation and Emergency Cardiovascular Care Science With Treatment Recommendations: Summary From the Basic Life Support; Advanced Life Support; Pediatric Life Support; Neonatal Life Support; Education, Implementation, and Teams; and First Aid Task Forces. *Circulation.* 2022 Nov 3. doi: 10.1161/CIR.0000000000001095. Epub ahead of print.

Levy MJ, Krohmer J, Goralnick E, Charlton N, Nemeth I, Jacobs L, **Goolsby CA**. A framework for the design and implementation of Stop the Bleed and public access trauma equipment programs. *J Am Coll Emerg Physicians Open.* 2022 Oct 27;3(5):e12833. doi: 10.1002/emp2.12833.

**Goolsby C**, Jonson CO, Goralnick E, Dacuyan-Faucher N, Schuler K, Kothera C, Shah A, Cannon J, Prytz E. The Untrained Public's Ability to Apply the Layperson Audiovisual Assist Tourniquet vs a Combat Application Tourniquet: A Randomized Controlled Trial. *J Am Coll Surg.* 2022 Sep 27. doi: 10.1097/XCS.0000000000000432. Epub ahead of print.

**Goolsby C**, Schuler K, Krohmer J, Gerstner DN, Weber NW, Slattery DE, Kuhls DA, Kirsch TD. Mass Shootings in America: Consensus Recommendations for Healthcare Response. *J Am Coll Surg.* 2022 Jul 18. doi: 10.1097/XCS.0000000000000312. Epub ahead of print.

**Goolsby C**. Triage Considerations for Mass Casualty Incidents: In Reply to Sherman. *J Am Coll Surg.* 2022 Dec 1;235(6):967-968. doi: 10.1097/XCS.0000000000000401. Epub 2022 Nov 15.

Cole R, Rudinsky S, Conley SP, Vojta L, Wook Kwon S, Garrigan AG, Prosek EA, **Goolsby C**. The Impact of Medical School on Military Physicians' Readiness for their First Deployment. *Mil Med.* 2022 Jul 1;187(7-8):e995-e1006. doi: 10.1093/milmed/usac049.

Wisk LE, Gottlieb MA, Spatz ES, Yu H, Wang RC, Slovis BH, Saydah S, Plumb ID, **O'Laughlin KN**, Montoy JCC, McDonald SA, Lin Z, Lin JS, Koo K, Idris AH, Huebinger RM, Hill MJ, Gentile NL, Chang AM, Anderson J, Hota B, Venkatesh AK, Weinstein RA, Elmore JG, Nichol G; INSPIRE Group. Association of Initial SARS- CoV-2 Test Positivity With Patient-Reported Well-being 3 Months After a Symptomatic Illness. *JAMA Netw Open.* 2022 Dec 1;5(12):e2244486. doi: 10.1001/jamanetworkopen.2022.44486.

Gentsch AT, Butler J, **O'Laughlin K**, Eucker SA, Chang A, Duber H, Geyer RE, Guth A, **Kanzaria HK**, Pauley A, Rising KL, Chavez CL, Tupetz A, **Rodriguez RM**. Perspectives of COVID-19 vaccine-hesitant emergency department patients to inform messaging platforms to promote vaccine uptake. *Acad Emerg Med.* 2022 Oct 30. doi: 10.1111/acem.14620. Epub ahead of print.



## Alumni Publications

Madhok DY, **Rodriguez RM**, Barber J, Temkin NR, Markowitz AJ, Kreitzer N, Manley GT; TRACK-TBI Investigators. Outcomes in Patients With Mild Traumatic Brain Injury Without Acute Intracranial Traumatic Injury. JAMA Netw Open. 2022 Aug 1;5(8):e2223245. doi: 10.1001/jamanetworkopen.2022.23245.

Baumann BM, **Rodriguez RM**, DeLaroche AM, Rayburn D, Eucker SA, Nadeau NL, Drago LA, Cullen D, Meskill SD, Bialeck S, Gillman M. Factors Associated With Parental Acceptance of COVID-19 Vaccination: A Multicenter Pediatric Emergency Department Cross-Sectional Analysis. Ann Emerg Med. 2022 Aug;80(2):130-142. doi: 10.1016/j.annemergmed.2022.01.040. Epub 2022 Feb 1.

Hewlett MM, Raven MC, Graham-Squire D, Evans JL, Cawley C, Kushel M, **Kanzaria HK**. Cluster Analysis of the Highest Users of Medical, Behavioral Health, and Social Services in San Francisco. J Gen Intern Med. 2022 Nov 29;1–9. doi: 10.1007/s11606-022-07873-y. Epub ahead of print.

Molina M, Evans J, Montoy JC, Cawley C, Graham-Squire D, Perez K, Raven M, **Kanzaria HK**. Analysis of Emergency Department Encounters Among High Users of Health Care and Social Service Systems Before and During the COVID-19 Pandemic. JAMA Netw Open. 2022 Oct 3;5(10):e2239076. doi: 10.1001/jamanetworkopen.2022.39076.

Fleming MD, Evans JL, Graham-Squire D, Cawley C, **Kanzaria HK**, Kushel MB, Raven MC. Association of Shelter-in-Place Hotels With Health Services Use Among People Experiencing Homelessness During the COVID-19 Pandemic. JAMA Netw Open. 2022 Jul 1;5(7):e2223891. doi: 10.1001/jamanetworkopen.2022.23891.

Walia H, Tucker LS, Manickam RN, Kene MV, Sharp AL, **Berdahl CT**, Hirschtritt ME. Patient and Visit Characteristics Associated With Physical Restraint Use in the Emergency Department. Perm J. 2022 Dec 4:1-9. doi: 10.7812/TPP/22.089. Epub ahead of print.

**Berdahl CT**, Henreid AJ, Pevnick JM, Zheng K, Nuckols TK. Digital Tools Designed to Obtain the History of Present Illness From Patients: Scoping Review. J Med Internet Res. 2022 Nov 17;24(11):e36074. doi: 10.2196/36074.

Khalil C, **Berdahl CT**, Simon K, Uphold H, Ghandehari S, Durra O, Glenn C 3rd, Kim L, Yumul R, Milam AJ. Experiences and Perspectives on Stressors and Organizational Strategies to Bolster Resiliency During the COVID-19 Pandemic: A Qualitative Study of Health Care Workers at a Tertiary Medical Center. J Occup Environ Med. 2022 Dec 1;64(12):1013-1017. doi: 10.1097/JOM.0000000000002626.

Green J, **Berdahl CT**, Ye X, Wertheimer JC. The impact of positive reinforcement on teamwork climate, resiliency, and burnout during the COVID-19 pandemic: The TEAM-ICU (Transforming Employee Attitudes via Messaging strengthens Interconnection, Communication, and Unity) pilot study. J Health Psychol. 2022 Jun 20;13591053221103640. doi: 10.1177/13591053221103640. Epub ahead of print.

du Fay de Lavallaz J, Zimmermann T, Badertscher P, Lopez-Ayala P, Nestelberger T, Miró Ò, Salgado E, Zaytseva X, Gafner MS, Christ M, Cullen L, Than M, Martin-Sanchez FJ, Di Somma S, Peacock WF, Keller DI, Costabel JP, Sigal A, Puelacher C, Wussler D, Koechlin L, Strebel I, Schuler S, Manka R, Bilici M, Lohrmann J, Kühne M, Breidhardt T, Clark CL, **Probst M**, Gibson TA, Weiss RE, Sun BC, Mueller C; BASEL IX and SRS Investigators. Performance of the American Heart Association/American College of Cardiology/Heart Rhythm Society versus European Society of Cardiology guideline criteria for hospital admission of patients with syncope. Heart Rhythm. 2022 Oct;19(10):1712-1722. doi: 10.1016/j.hrthm.2022.05.024. Epub 2022 May 27.

**Painter K**, Cordell BJ, Sticco KL. Auto-brewery Syndrome. 2022 Sep 16. In: StatPearls [Internet]. Treasure Island (FL): StatPearls Publishing; 2022 Jan–.

**Painter K**, Anand S, Philip K. Omphalitis. 2022 Sep 12. In: StatPearls [Internet]. Treasure Island (FL): StatPearls Publishing; 2022 Jan–.

Reese TJ, Nelson SD, Marcovitz D, Shotwell M, Edwards DA, Wright A, **Barrett TW**. Evaluation of Compensatory Prescribing After Opioid-Restricting Legislation. J Gen Intern Med. 2022 Nov 15. doi: 10.1007/s11606-022-07941-3. Epub ahead of print.

## Alumni Publications

Turer RW, Champion JC, Rothman BS, Dunn HS, Jenkins KM, Everham O, **Barrett TW**, Jones ID, Ward MJ, Miller NM. Decision Support to Improve Critical Care Services Documentation in an Academic Emergency Department. Appl Clin Inform. 2022 Oct;13(5):1100-1107. doi: 10.1055/a-1950-9032. Epub 2022 Sep 26.

Chen JW, Yengo-Kahn A, Chotai S, Bhamidipati A, Smith C, Davis P, Reynolds RA, Boyd MP, **Barrett TW**, Compton ES, Dennis BM, Norris MS, Patel MB, Schwarz JP, Thomason NR, Thompson RC, Guillaumondegui OD. Assessment of safety and effectiveness of non-neurosurgical management for minimal traumatic brain injury (TBI). Injury. 2022 Aug 6:S0020-1383(22)00571-X. doi: 10.1016/j.injury.2022.08.009. Epub ahead of print.

McEvoy MD, Dear ML, Buie R, Edwards DA, **Barrett TW**, Allen B, Robertson AC, Fowler LC, Hennessy C, Miller BM, Garvey KV, Bland RP 3rd, Fleming GM, Moore D, Rice TW, Bernard GR, Lindsell CJ; Vanderbilt Learning Healthcare System Platform Investigators and the Vanderbilt Committee on Opioid Monitoring and Stewardship. Effect of Smartphone App-Based Education on Clinician Prescribing Habits in a Learning Health Care System: A Randomized Cluster Crossover Trial. JAMA Netw Open. 2022 Jul 1;5(7):e2223099. doi: 10.1001/jamanetworkopen.2022.23099.

**Barrett TW**, Garland NM, Freeman CL, Klar K, Dahlke J, Lancaster P, Prisco L, Chang SS, Goff LW, Russ S, Jones ID. Catching Those Who Fall Through the Cracks: Integrating a Follow-Up Process for Emergency Department Patients with Incidental Radiologic Findings. Ann Emerg Med. 2022 Sep;80(3):235-242. doi: 10.1016/j.annemergmed.2022.04.026. Epub 2022 Jun 23..

Nelson SD, McCoy AB, Rector H, Teare AJ, **Barrett TW**, Sigworth EA, Chen Q, Edwards DA, Marcovitz DE, Wright A. Assessment of a Naloxone Coprescribing Alert for Patients at Risk of Opioid Overdose: A Quality Improvement Project. Anesth Analg. 2022 Jul 1;135(1):26-34. doi: 10.1213/ANE.0000000000005976. Epub 2022 Jun 16.

**Terp S**, Reichert Z, Burner E, Randhawa J, Axeen S, Messina M, Dworkis DA, **Menchine M**, Lam CN, Banerjee J, Spellberg B, **Arora S**. Characteristics and Outcomes of 360 Consecutive COVID-19 Patients Discharged from the Emergency Department with Supplemental Oxygen. Ann Emerg Med. 2022 Nov 2:S0196-0644(22)01037-X. doi: 10.1016/j.annemergmed.2022.08.449. Epub ahead of print.

Dworkis DA, Jain A, Wolfe M, Sanko S, **Arora S**. Cognitive load during training for out-of-department emergency responses. AEM Educ Train. 2022 Jun 1;6(3):e10742. doi: 10.1002/aet2.10742.

Kelley MA, Lev R, Lucas J, Knight T, Stewart E, **Menchine M**, Doctor JN. Association of Fatal Overdose Notification Letters With Prescription of Benzodiazepines: Secondary Analysis of a Randomized Clinical Trial. JAMA Intern Med. 2022 Oct 1;182(10):1099-1100. doi: 10.1001/jamainternmed.2022.3372.

**Parmar P**, Mon SHH, Beyrer C. The Rohingya genocide and lessons learned from Myanmar's Spring Revolution. Lancet. 2022 Sep 10;400(10355):793-795. doi: 10.1016/S0140-6736(22)01651-8. Epub 2022 Aug 26.

**Wolfe C**, Halsey-Nichols M, Ritter K, McCoin N. Abdominal Pain in the Emergency Department: How to Select the Correct Imaging for Diagnosis. Open Access Emerg Med. 2022 Jul 20;14:335-345. doi: 10.2147/OAEM.S342724.

Vasti E, **Tabas JA**, Hoffman A, Pletcher M. Use and diagnostic value of liver enzyme tests in the emergency department and subsequent heart failure diagnosis: a retrospective cohort study. BMJ Open. 2022 Mar 30;12(3):e055216. doi: 10.1136/bmjopen-2021-055216. PMID: 35354618; PMCID: PMC8968565.

Hashemi M, Mahmood SMJ, Fernandez J, **Oswald J**. Cryoneurolysis of Intercostal Nerve for Rib Trauma and Intercostal Neuralgia in the Emergency Department: A Multidisciplinary Approach. J Emerg Med. 2022 Sep;63(3):376-381. doi: 10.1016/j.jemermed.2022.06.009. Epub 2022 Oct 12.

Erosa SC, Moheimani RS, **Oswald JC**, Castellanos JP, Abraham ME, Schuster NM. Peripheral Nerve Stimulation for Chronic Pain and Migraine: A Review. Phys Med Rehabil Clin N Am. 2022 May;33(2):379-407. doi: 10.1016/j.pmr.2022.01.007.



# Alumni Publications

Goett R, **Isaacs ED**, Chan GK, Wang D, Aberger K, Pearl R, Rosenberg M, Loffredo AJ, Lamba S. Quality measures for palliative care in the emergency department. Acad Emerg Med. 2022 Sep 7. doi: 10.1111/acem.14592. Epub ahead of print.

Grudzen CR, Barker PC, Bischof JJ, Cuthel AM, **Isaacs ED**, Southerland LT, Yamarik RL. Palliative care models for patients living with advanced cancer: a narrative review for the emergency department clinician. Emerg Cancer Care. 2022;1(1):10. doi: 10.1186/s44201-022-00010-9. Epub 2022 Aug 5.

Carpenter CR, Leggett J, Bellolio F, Betz M, Carnahan RM, Carr D, Doering M, Hansen JC, **Isaacs ED**, Jobe D, Kelly K, Morrow-Howell N, Prusaczyk B, Savage B, Suyama J, Vann AS, Rising KL, Hwang U, Shah MN; Geriatric Emergency care Applied Research 2.0 Network. Emergency Department Communication in Persons Living With Dementia and Care Partners: A Scoping Review. J Am Med Dir Assoc. 2022 Aug;23(8):1313.e15-1313.e46. doi: 10.1016/j.jamda.2022.02.024.

Fazio D, Zuiderveen S, Guyet D, Reid A, Lalane M, McCormack RP, **Wall SP**, Shelley D, Mijanovich T, Shinn M, Doran KM. ED-Home: Pilot feasibility study of a targeted homelessness prevention intervention for emergency department patients with drug or unhealthy alcohol use. Acad Emerg Med. 2022 Oct 21. doi: 10.1111/acem.14610. Epub ahead of print.

**Spaite DW**, Hu C, Bobrow BJ, Barnhart B, Chikani V, Gaither JB, Denninghoff KR, Bradley GH, Rice AD, Howard JT, Keim SM. Optimal Out-of-Hospital Blood Pressure in Major Traumatic Brain Injury: A Challenge to the Current Understanding of Hypotension. Ann Emerg Med. 2022 Jul;80(1):46-59. doi: 10.1016/j.annemergmed.2022.01.045. Epub 2022 Mar 24.

Penny CL, Koenig KL, Marty AM, Bey CK, **Norton VC**. Man with Painful tongue lesions. JACEP Open 2022; [doi.org/10.1002/emp2.12858](https://doi.org/10.1002/emp2.12858)